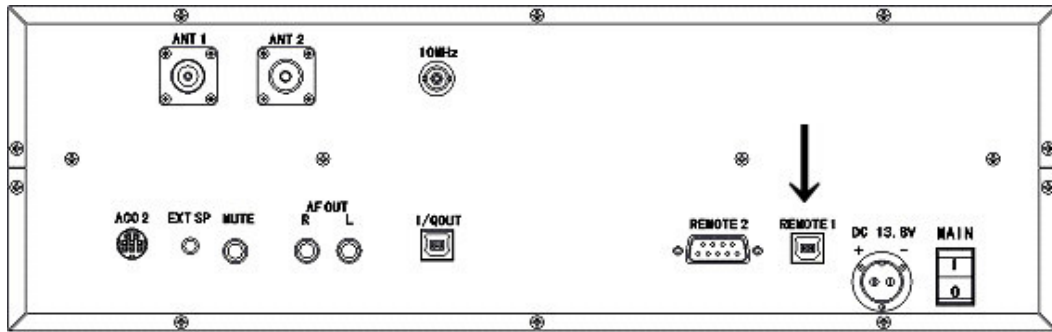


## 1. HARDWARE & USB DRIVER INSTALLATION

- 1) Connect one USB cable to the **REMOTE 1** socket on the rear panel of AR-Alpha, and to a spare USB socket of the PC. (Cable type “USB-A to USB-B”)



- 2) Switch AR-Alpha on.

Windows detects the new hardware and begins the driver installation procedure.

NB: These messages may differ slightly depending on which version of the Windows operating system and which driver version is used. These screenshots were made with Windows XP.

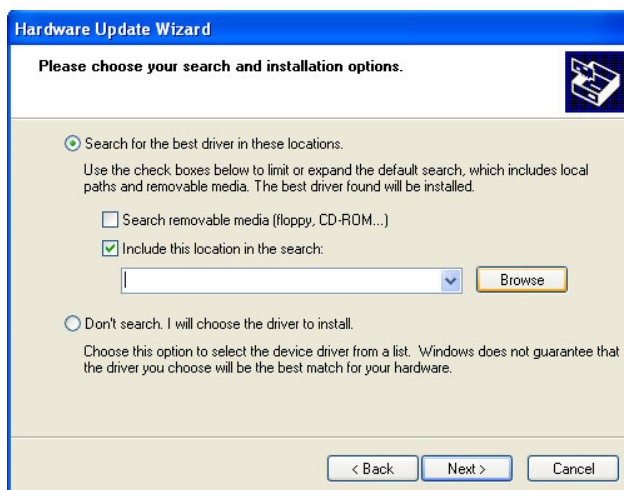


Windows is asking to connect to Windows Update to search for software.

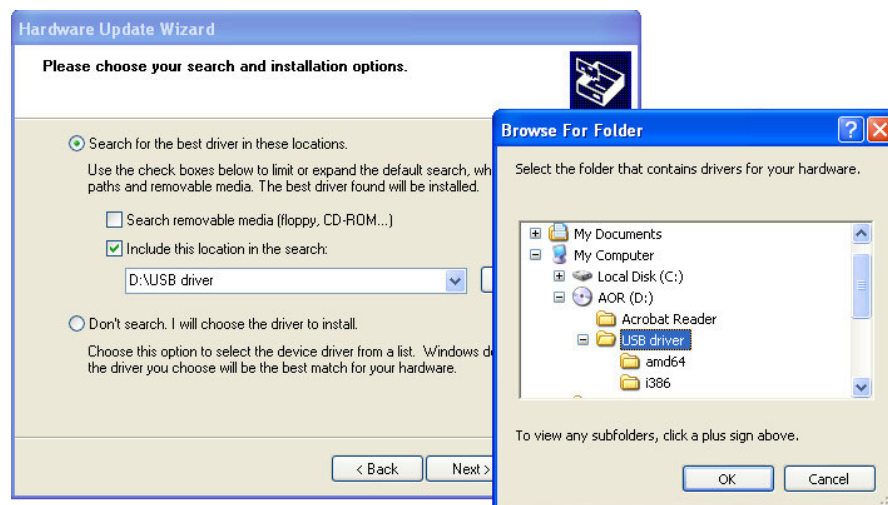
- 3) Select “NO, NOT THIS TIME” and lick “Next”.



- 4) By default the above screen has the “Install the software automatically” box selected, but you need to select the box below, labeled “Install from a list or specific location”. Then click next.



- 5) Locate the folder containing the USB driver by clicking on “Browse”, and validate with “OK”. In case you are loading the driver files from the CD supplied with AR-ALPHA, proceed as below by selecting the “USB driver” folder inside the CD.



6) Validate your selection with “OK”

Note: A newer USB driver might be available from the following URL:

<http://www.ftdichip.com/ftdrivers.htm>

Click “VCP Drivers”: then select the device number “FT232B”. In that case download the zip file and unzip it to the folder of your choice. This is then the folder you have to locate in the hardware update wizard.



Windows informs the user about the status of the Windows Logo testing of this USB driver.

7) Click “Continue Anyway”.

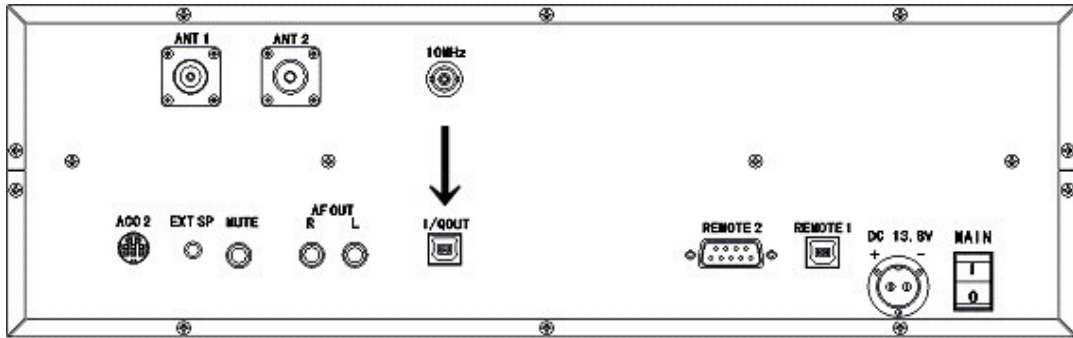
Allow the driver installation to set up automatically.



The USB driver is now installed.

## 2. HARDWARE & IQ DRIVER INSTALLATION

- 1) Connect another USB cable to the **IQ OUT** socket on the rear panel of AR-Alpha, and to a spare USB socket of the PC. (Cable type “USB-A to USB-B”)



- 2) Make sure AR-Alpha is switched ON.

Windows detects the new hardware and begins the driver installation procedure.

NB: These messages may differ slightly depending on which version of the Windows operating system and which driver version is used. These screenshots were made with Windows XP.

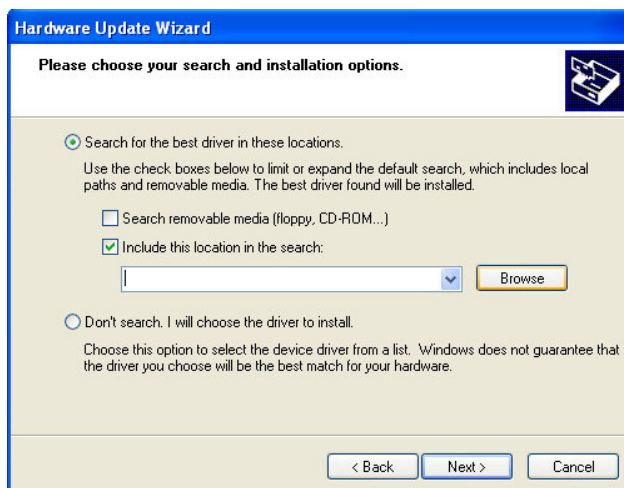


Windows is asking to connect to Windows Update to search for software.

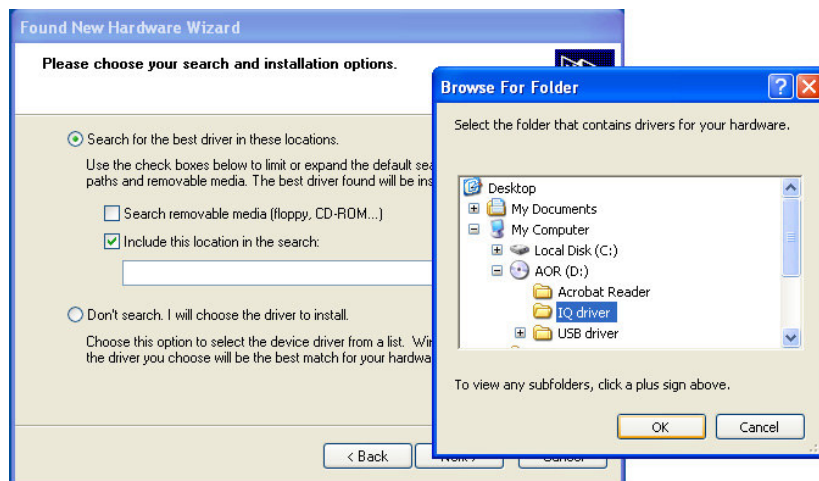
- 3) Select “NO, NOT THIS TIME” and lick “Next”.



- 4) By default the above screen has the “Install the software automatically” box selected, but you need to select the box below labeled “Install from a list or specific location”. Then click next.



- 5) Locate the folder containing the IQ driver by clicking on “Browse”, and validate with “OK”.  
In case you are loading the driver files from the CD supplied with AR-ALPHA, proceed as below by selecting the “IQ driver” folder inside the CD.



6) Validate your selection with “OK”.

Allow the driver installation to set up automatically.



The IQ driver is now installed.