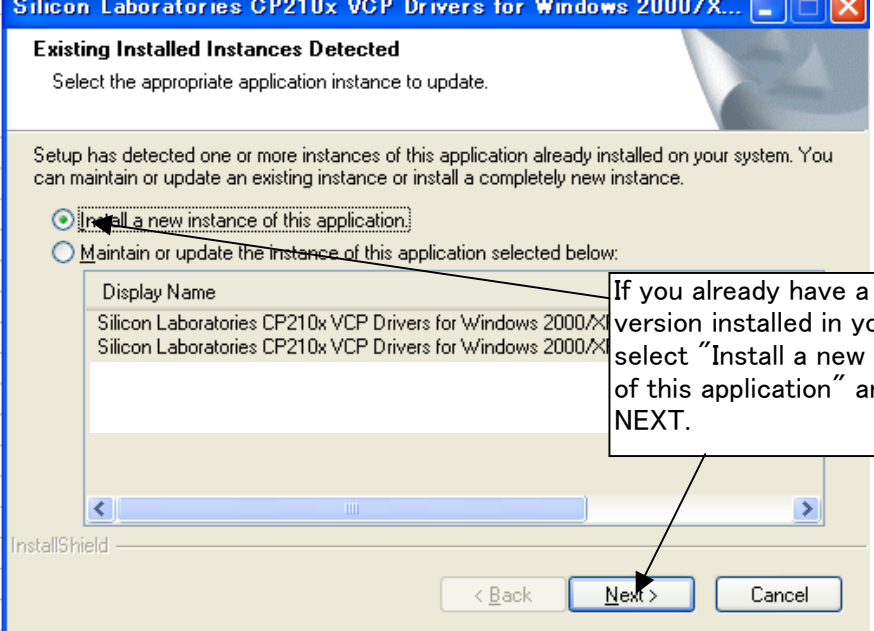
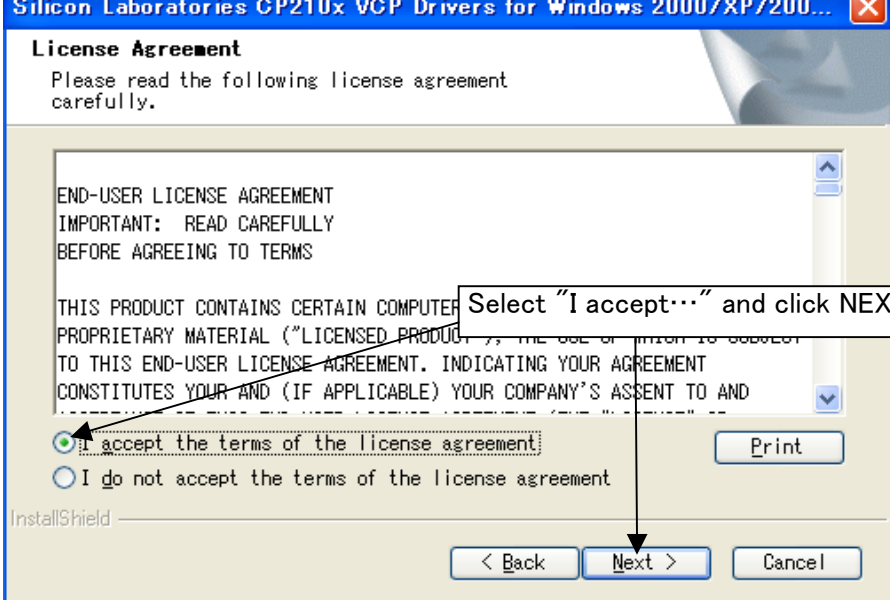


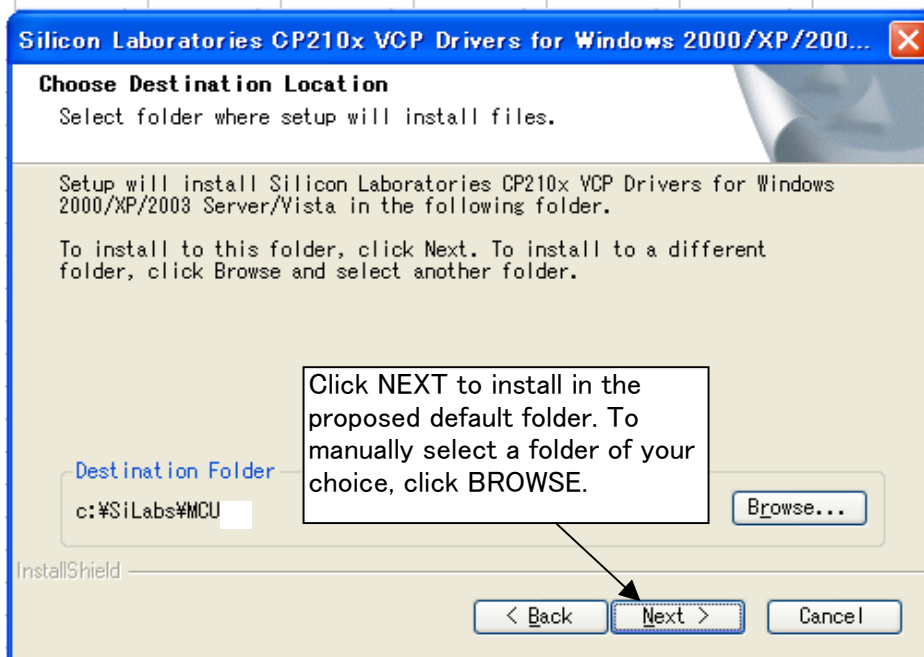
DRIVER INSTALLATION PROCEDURE

- (1)  **CP210x VCP Win2K XP S2K3 Setup.exe**
Macrovision Corporation
- Execute the file you have downloaded

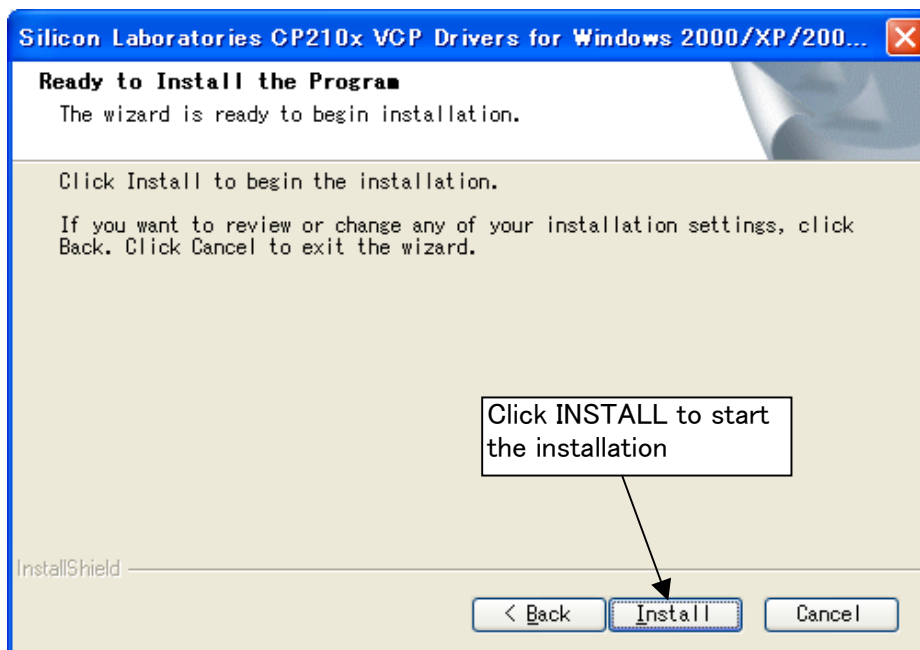
- (2) 
- Existing Installed Instances Detected**
Select the appropriate application instance to update.
- Setup has detected one or more instances of this application already installed on your system. You can maintain or update an existing instance or install a completely new instance.
- ☒ Install a new instance of this application.
- ☐ Maintain or update the instance of this application selected below:
- | Display Name |
|---|
| Silicon Laboratories CP210x VCP Drivers for Windows 2000/X... |
| Silicon Laboratories CP210x VCP Drivers for Windows 2000/X... |
- If you already have a previous version installed in your PC, select "Install a new instance of this application" and click NEXT.
- InstallShield
- < Back Next > Cancel

- (3) 
- License Agreement**
Please read the following license agreement carefully.
- END-USER LICENSE AGREEMENT
IMPORTANT: READ CAREFULLY
BEFORE AGREEING TO TERMS
- THIS PRODUCT CONTAINS CERTAIN COMPUTER PROPRIETARY MATERIAL ("LICENSED PRODUCT"), THE USE OF WHICH IS SUBJECT TO THIS END-USER LICENSE AGREEMENT. INDICATING YOUR AGREEMENT CONSTITUTES YOUR AND (IF APPLICABLE) YOUR COMPANY'S ASSENT TO AND
- ☒ I accept the terms of the license agreement
- ☐ I do not accept the terms of the license agreement
- Select "I accept..." and click NEXT.
- Print
- InstallShield
- < Back Next > Cancel

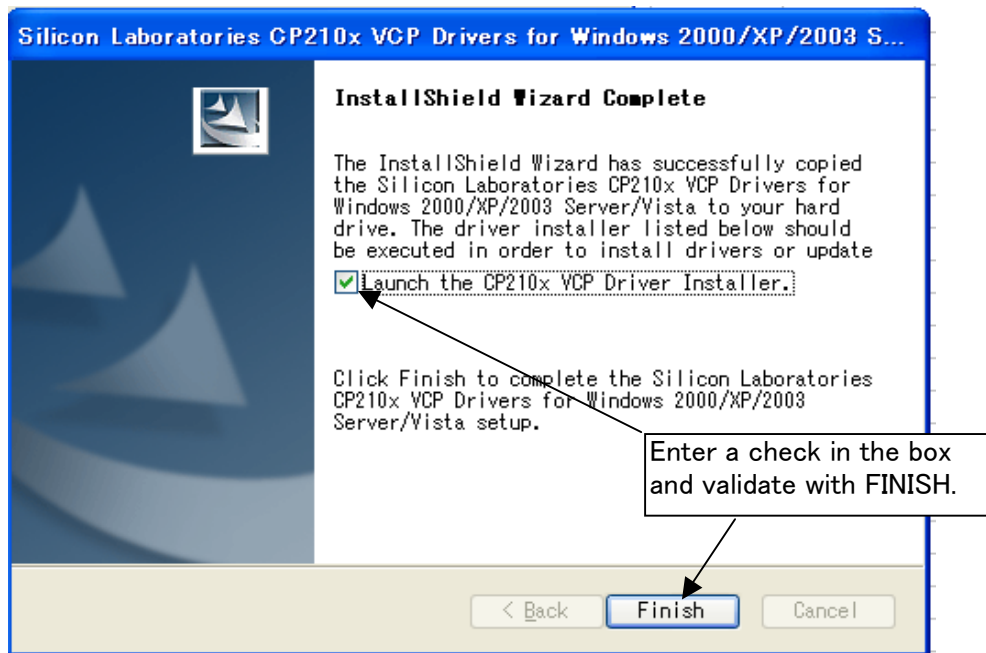
(4)



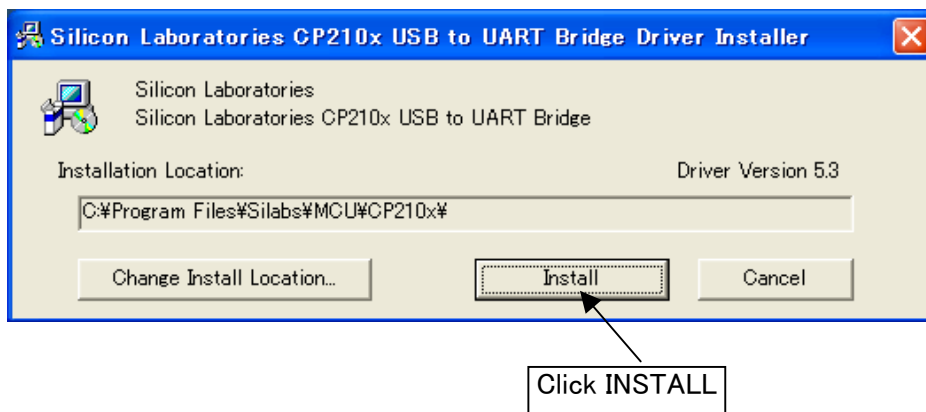
(5)



(6)



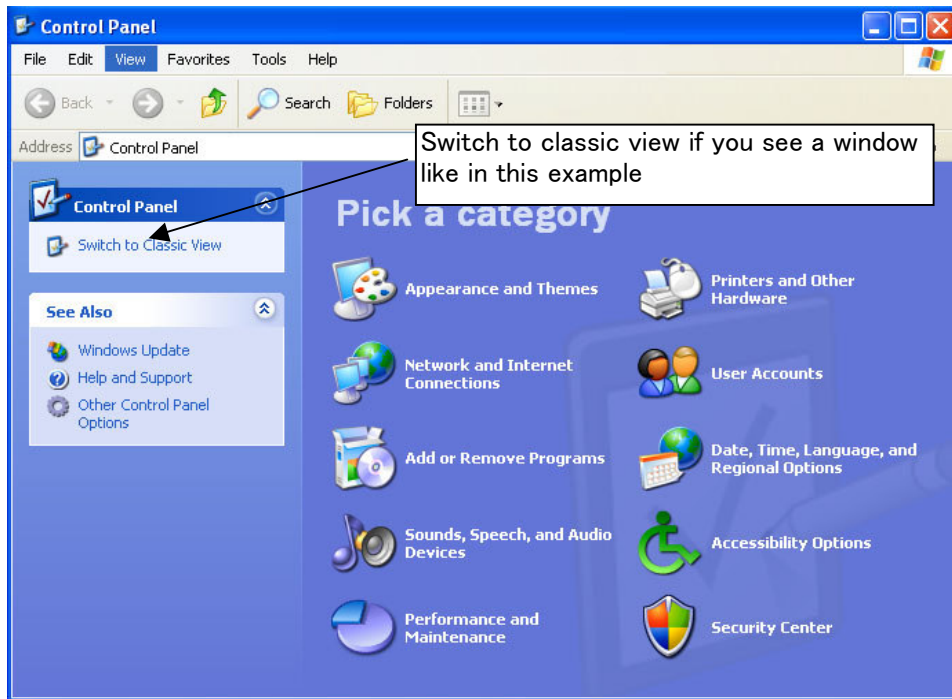
(7)



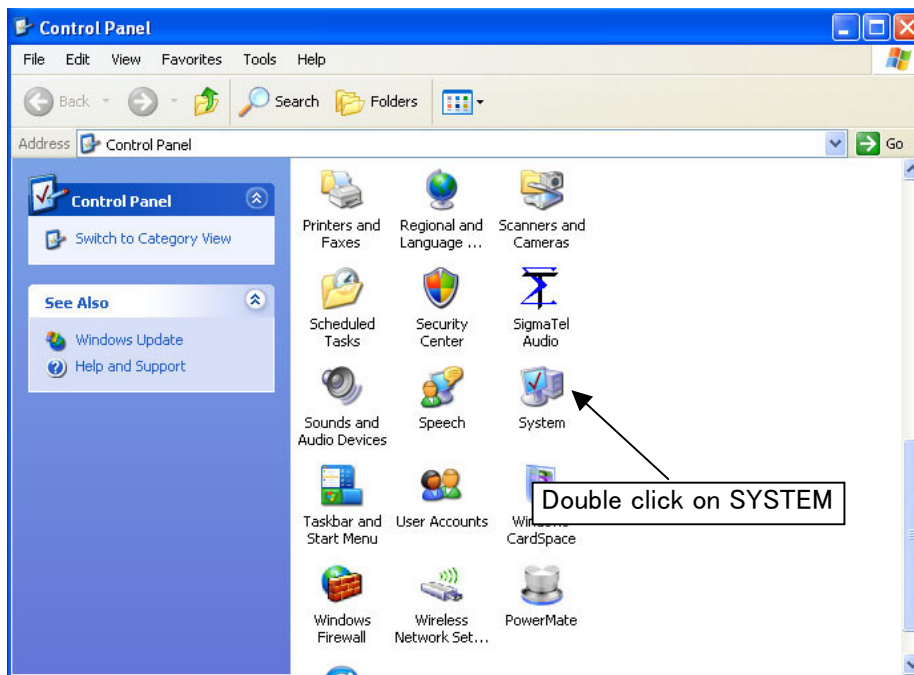
You're done!

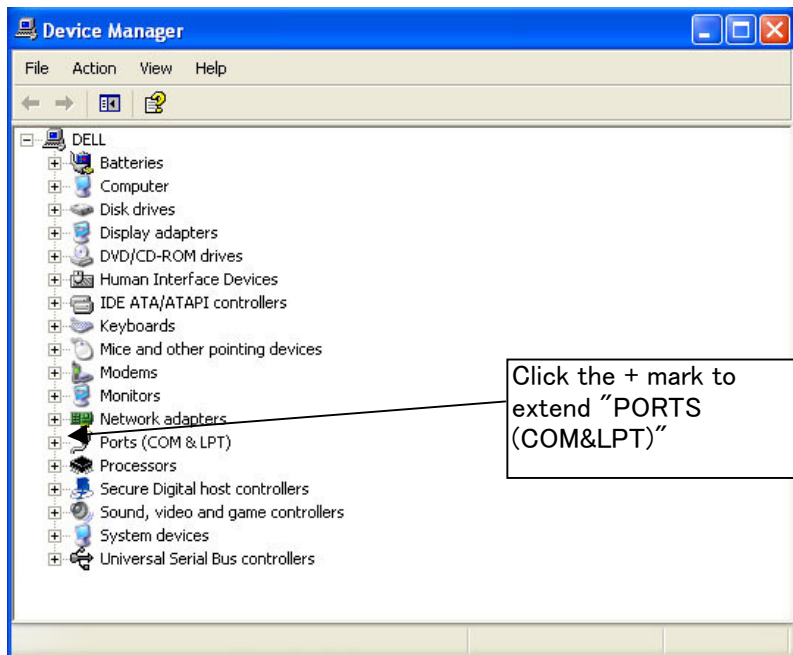
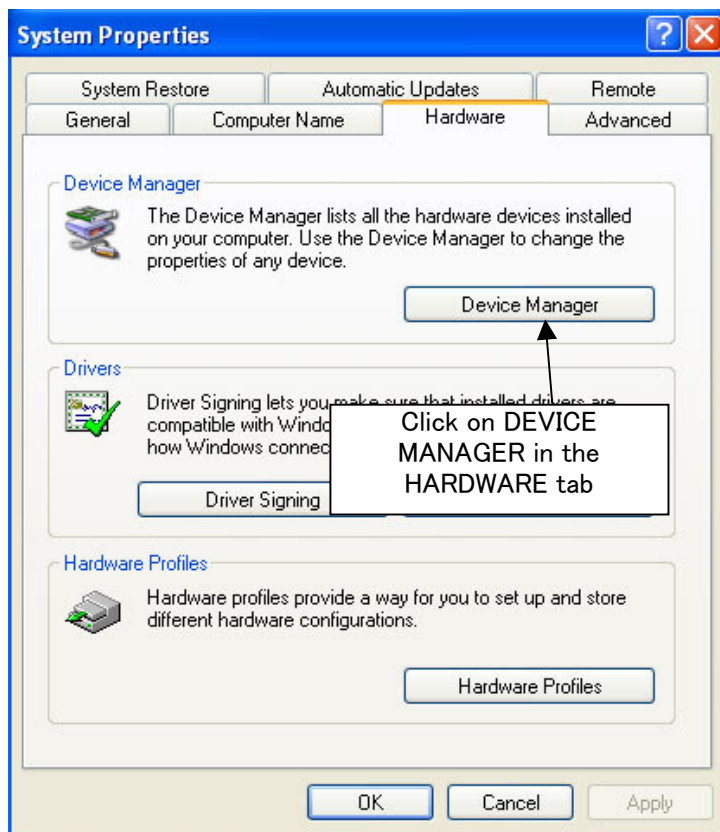
VERIFYING THE PC SETTINGS

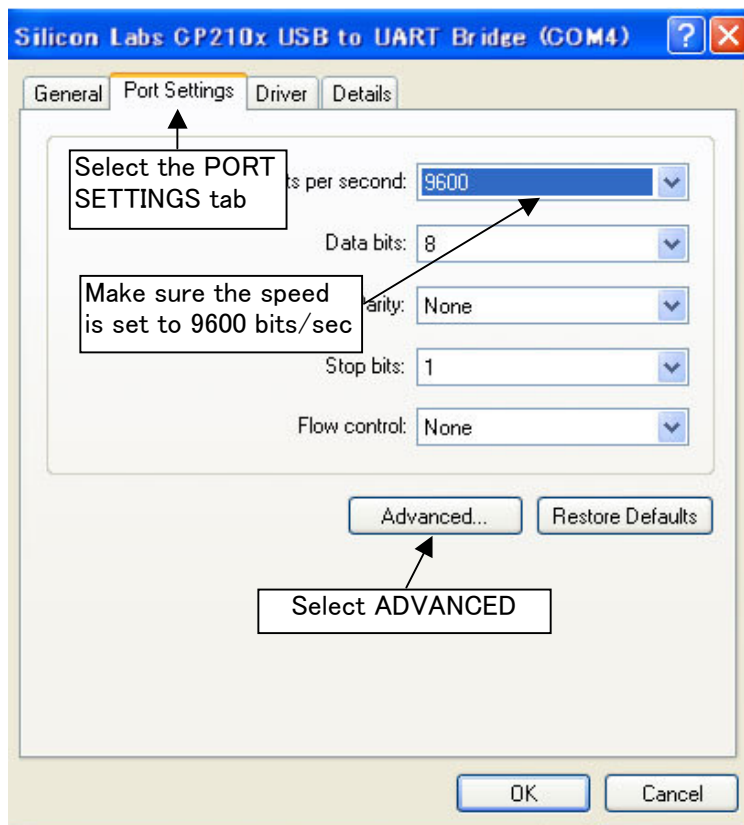
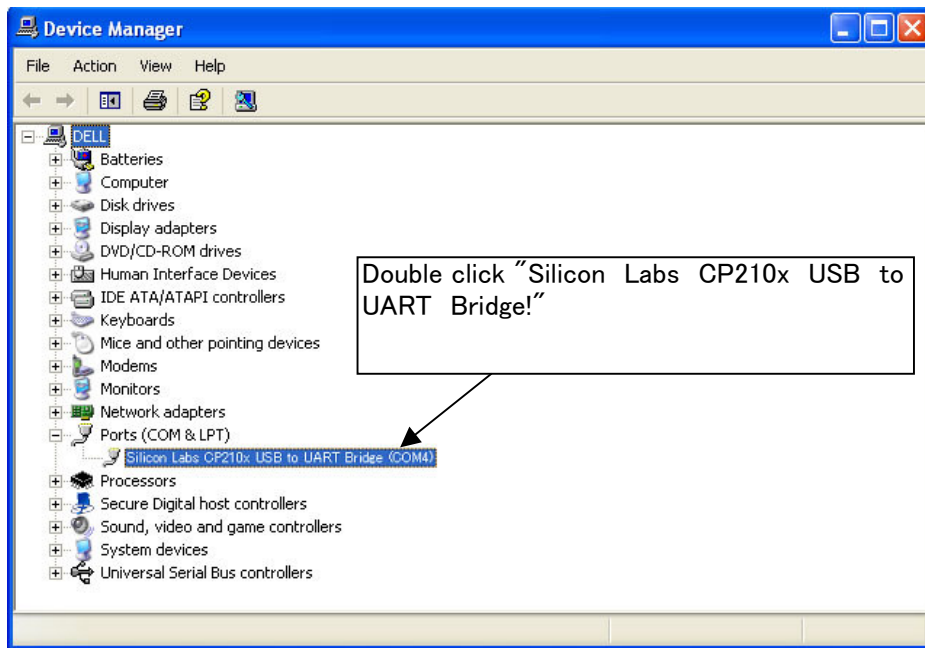
Connect AR-mini to your PC through USB
Click on START followed by CONTROL PANEL

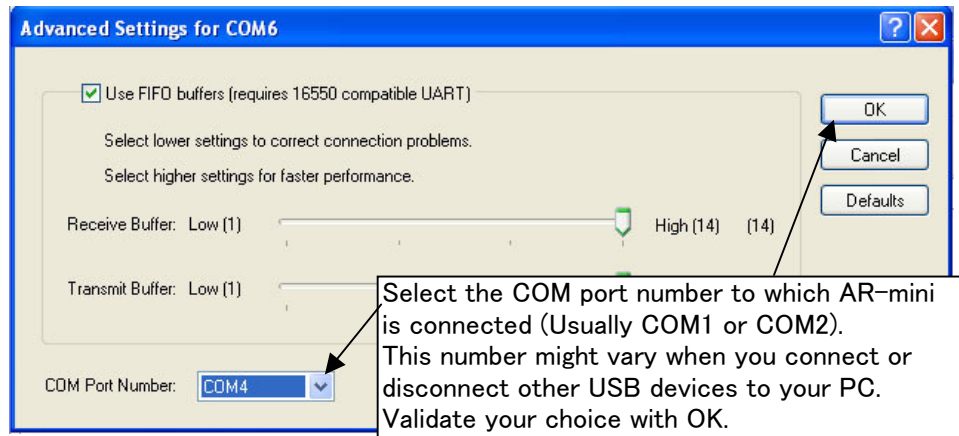


Classic view



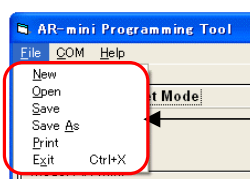
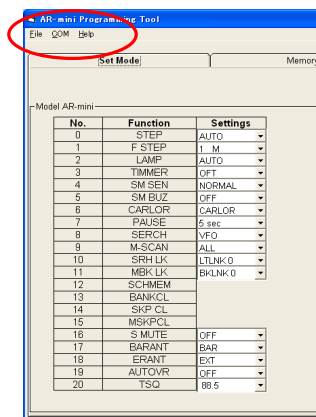






QUICK GUIDE to the AR-mini Programming Tool

MENU BAR



New: Start a new job

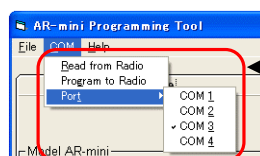
Open: Open previously saved job

Save: Save what you are doing to the same file

Save As: Save what you are doing to a new file

Print: Print your memory data

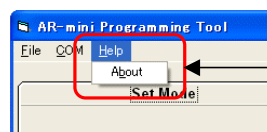
Exit: Exit this program



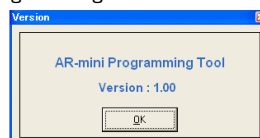
Read from Radio: Import data from AR-mini receiver

Program to Radio: Export data to AR-mini receiver

Port: Select the port to which AR-mini is connected

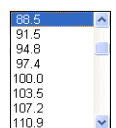
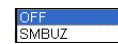
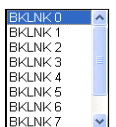
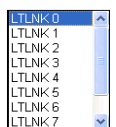
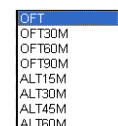
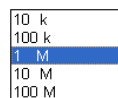
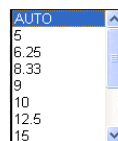
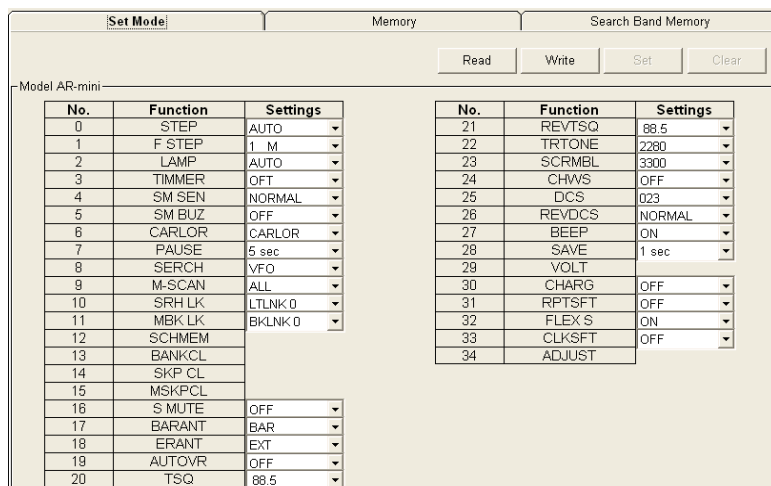


About: Programming Tool's version number



SETTINGS

To modify settings of your AR-mini receiver



MEMORY MANAGEMENT

Memory channel

Set Mode Memory Search Band Memory

Read Write Clear Clear All

Model AR-mini

No.	Frequency	NAME	Mode	TONE SELECT	TSQ	REVTSQ	DCS	REVDSC	SCALR	TRAIN
000										
001										
002										
003										
004										
005										
006										
007										
008										
009										
010										
011										
012										
013										
014										
015										
016										
017										
018										
019										
020										
021										

Click on the memory channel number you need to edit

Edit Memory

To save all your entries

Enter the frequency Up to 6 characters

No. 000 Frequency MHz NAME Mode

Mode: Either AM, FM or WFM

TONE SELECT TSQ R TSQ V.INV

DCS R DCS TRAIN

Japanese version only

Active or not depending on your choice in TONE SELECT

If SET does not bring you to the previous screen, your entries are incorrect or insufficient.

Examples of correct entries

Edit Memory

Set Clear

No. 000 Frequency 84.70000 MHz NAME F-YOKO Mode wFM

TONE SELECT TSQ R TSQ V.INV

DCS R DCS TRAIN

Edit Memory

Set Clear

No. 000 Frequency 433.20000 MHz NAME CLUB Mode FM

TONE SELECT TSQ R TSQ V.INV

DCS R DCS TRAIN

SEARCH BAND MEMORY

Set Mode		Memory		Search Band Memory	
				Read	Write
				Set	Clear
Model AR-mini					
No.	Low Frequency	Upper Frequency			
L00	0.10000	1299.99500			
L01	0.10000	1299.99500			
L02	0.10000	1299.99500			
L03	0.10000	1299.99500			
L04	0.10000	1299.99500			
L05	0.10000	1299.99500			
L06	0.10000	1299.99500			
L07	0.10000	1299.99500			
L08	0.10000	1299.99500			
L09	0.10000	1299.99500			
L10	0.10000	1299.99500			
L11	0.10000	1299.99500			
L12	0.10000	1299.99500			
L13	0.10000	1299.99500			
L14	0.10000	1299.99500			
L15	0.10000	1299.99500			
L16	0.10000	1299.99500			
L17	0.10000	1299.99500			

Set Mode		Memory		Search Band Memory	
				Read	Write
				Set	Clear
Model AR-mini					
No.	Low Frequency	Upper Frequency			
L00	0.10000	1299.99500			
L01	0.10000	1299.99500			
L02	0.10000	1299.99500			
L03	0.10000	1299.99500			
L04	0.10000	1299.99500			
L05	0.10000	1299.99500			
L06	0.10000	1299.99500			
L07	0.10000	1299.99500			
L08	0.10000	1299.99500			
L09	0.10000	1299.99500			
L10	0.10000	1299.99500			
L11	0.10000	1299.99500			
L12	0.10000	1299.99500			
L13	0.10000	1299.99500			
L14	0.10000	1299.99500			
L15	0.10000	1299.99500			
L16	0.10000	1299.99500			
L17	0.10000	1299.99500			

No.	Low Frequency		No.	Upper Frequency	
L00	0.10000	MHz	L00	1299.99500	MHz

Click on the memory line of your choice to edit the content

Set Mode		Memory		Search Band Memory	
				Read	Write
				Set	Clear
Model AR-mini					
No.	Low Frequency	Upper Frequency			
L00	51.00000	53.99000			
L01	0.10000	1299.99500			
L02	0.10000	1299.99500			
L03	0.10000	1299.99500			
L04	0.10000	1299.99500			
L05	0.10000	1299.99500			
L06	0.10000	1299.99500			
L07	0.10000	1299.99500			
L08	0.10000	1299.99500			
L09	0.10000	1299.99500			
L10	0.10000	1299.99500			
L11	0.10000	1299.99500			
L12	0.10000	1299.99500			
L13	0.10000	1299.99500			
L14	0.10000	1299.99500			
L15	0.10000	1299.99500			
L16	0.10000	1299.99500			
L17	0.10000	1299.99500			

No.	Low Frequency		No.	Upper Frequency	
L00	51.00000	MHz	L00	53.99000	MHz

Enter the desired LOW and UPPER frequencies and validate with SET

ERASING MEMORY

Set Mode

Memory

Search Band Memory

Read

Write

Clear

Clear All

Model AR-mini

No.	Frequency	NAME	Mode	TONE SELECT	TSQ	REVT SQ	DCS	REV DCS	SCALR	TRAM
000	82.50000		WFM	VFO						
001	84.70000		WFM	VFO						
002	80.00000		WFM	VFO						
003	51.02000		FM	VFO						
004										
005										
006										
007										
008										
009										
010										
011										
012										
013										
014										
015										
016										
017										
018										
019										
020										
021										

Select the memory channel number
you wish to erase and click on CLEAR.

To erase all memory channels, click on
CLEAR ALL