

SR2000LOG

INSTALLATION GUIDE

Minimum hardware requirements:

O S : Windows XP , Windows 2000

C P U : Pentium 450Mhz

R A M : 6 4 M B

H D D : 1 0 0 M B , but 10GB strongly advised as database files can get big.

Necessary files:

- Firebird-1.5.2.4731-Win32.exe
- Iboconsole_20031206.zip
- SR2000LOG_050425.ZIP
- SR2000Log.exe

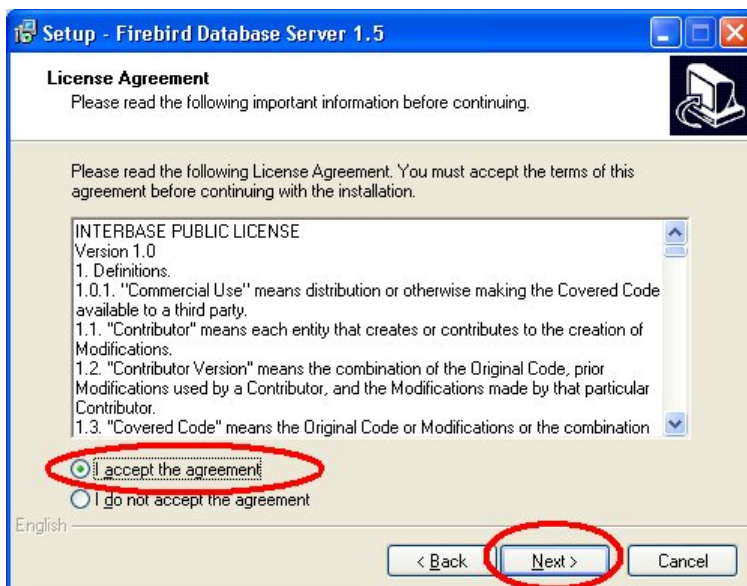
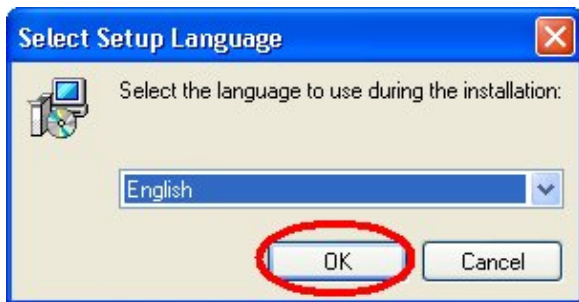
Installation order (be sure to follow this order, or the program will not function)

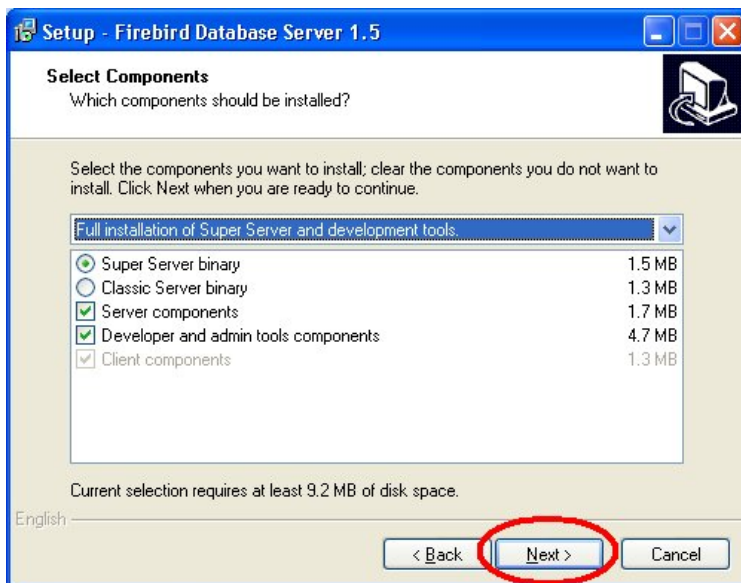
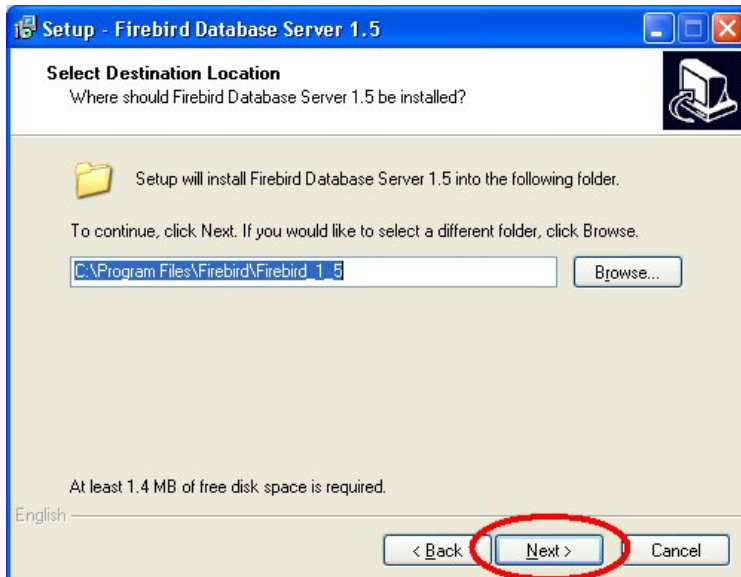
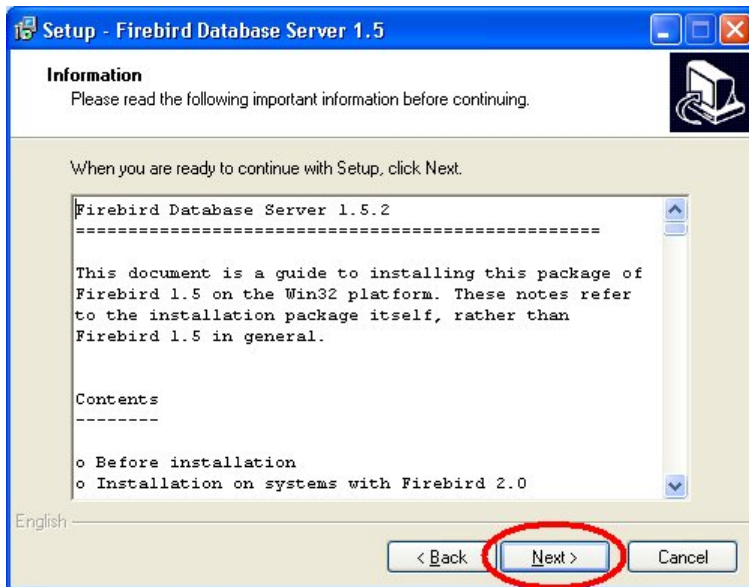
- 1 . Firebird
- 2 . Iboconsole
- 3 . SR2000LOG
- 4 . Replacement of SR2000Log.exe

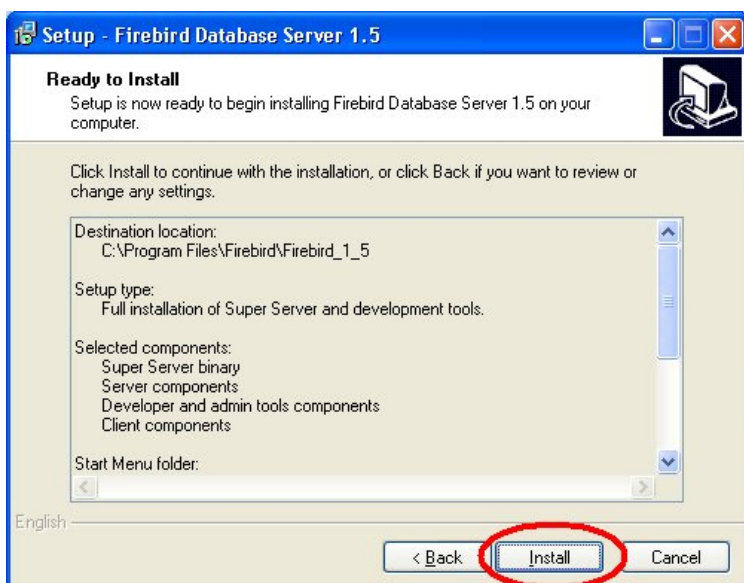
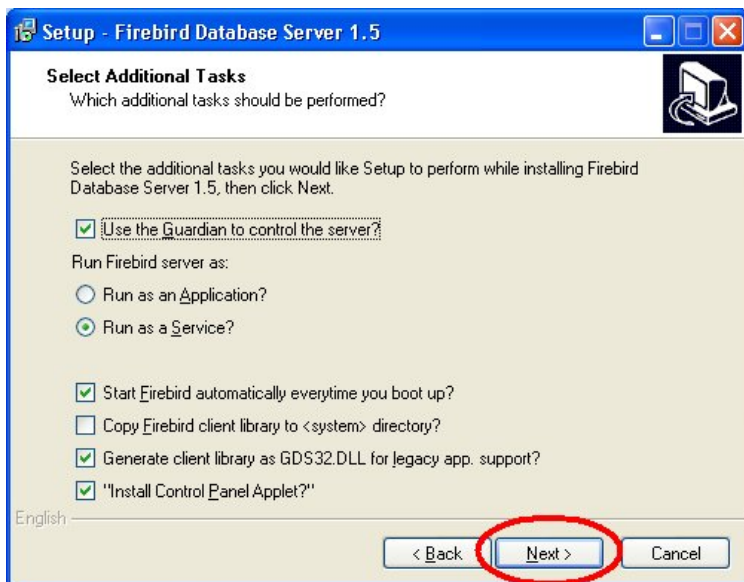
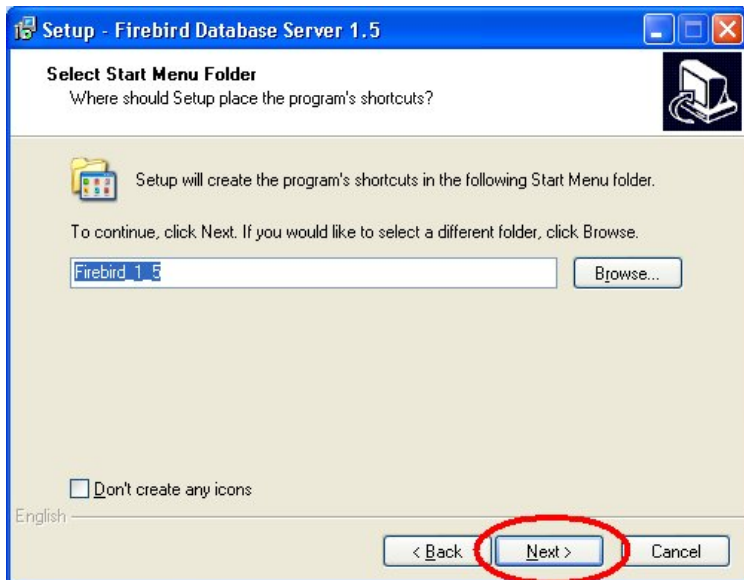
Do not execute this file! See instruction later in this manual.

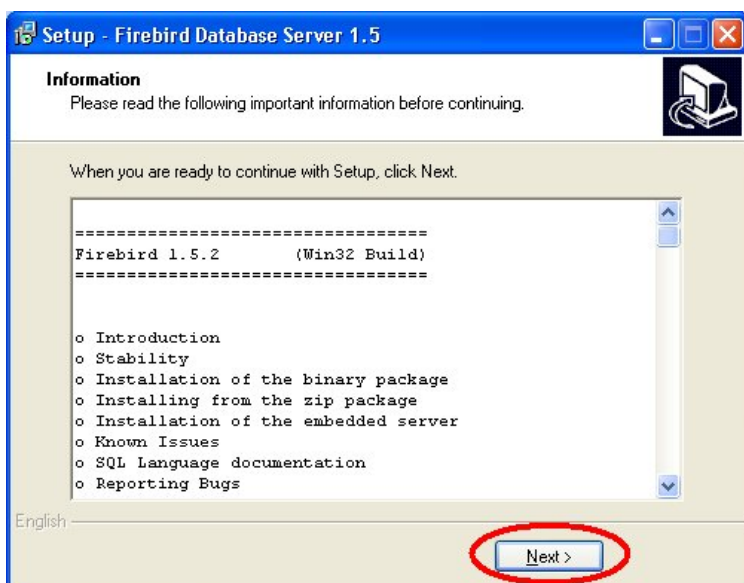
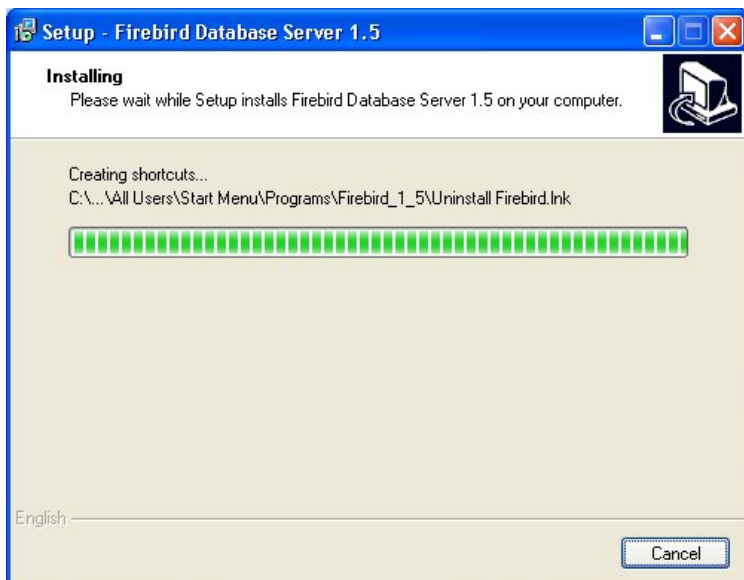
Following screenshots were made during installation & use on WindowsXP.

1. Installing Firebird

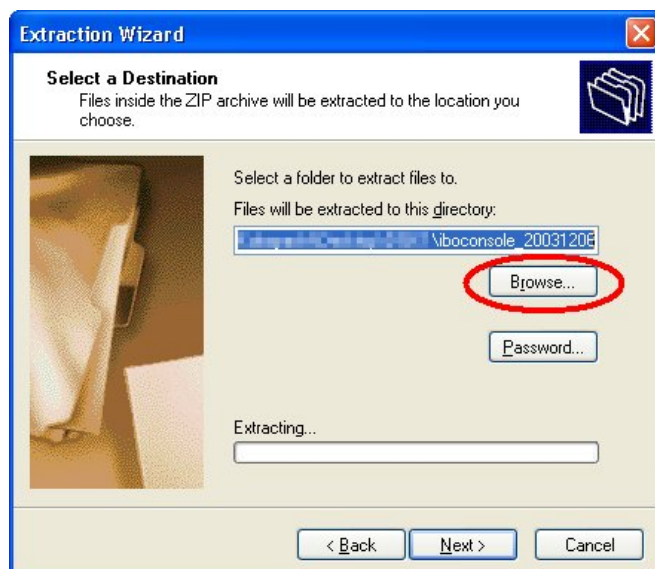
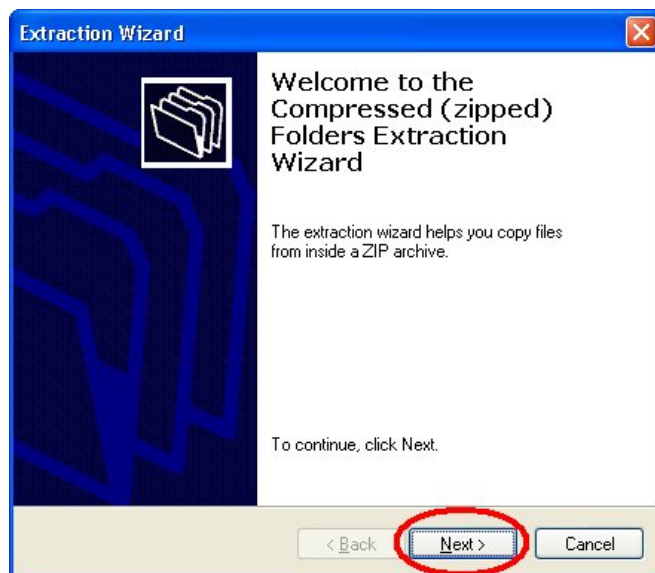
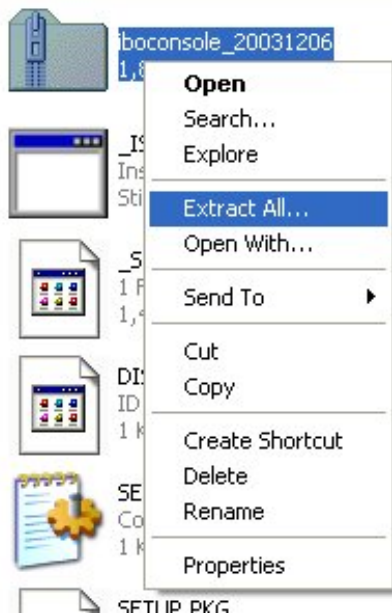


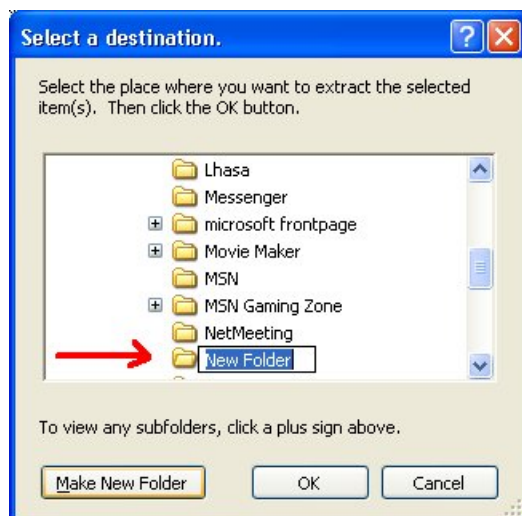


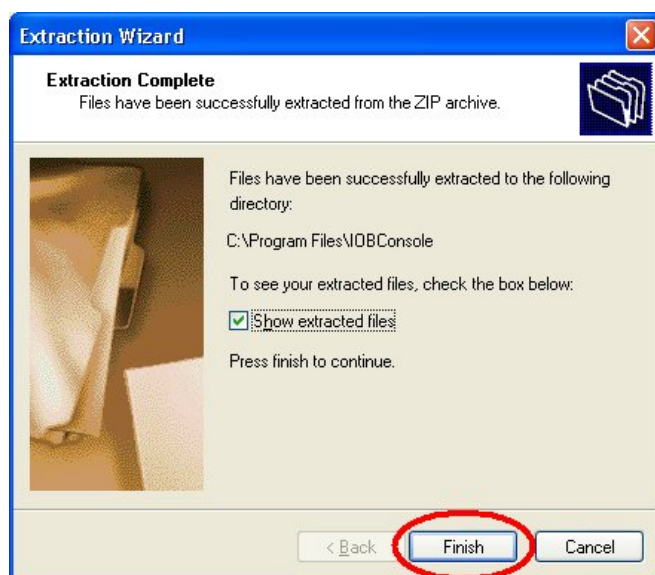
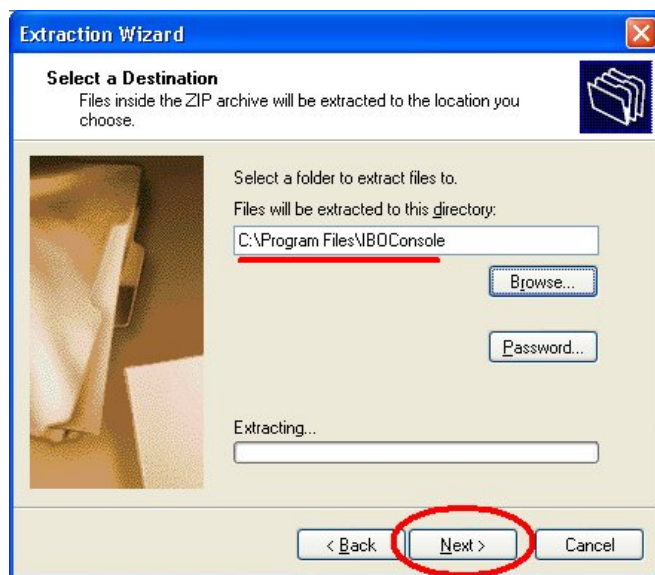


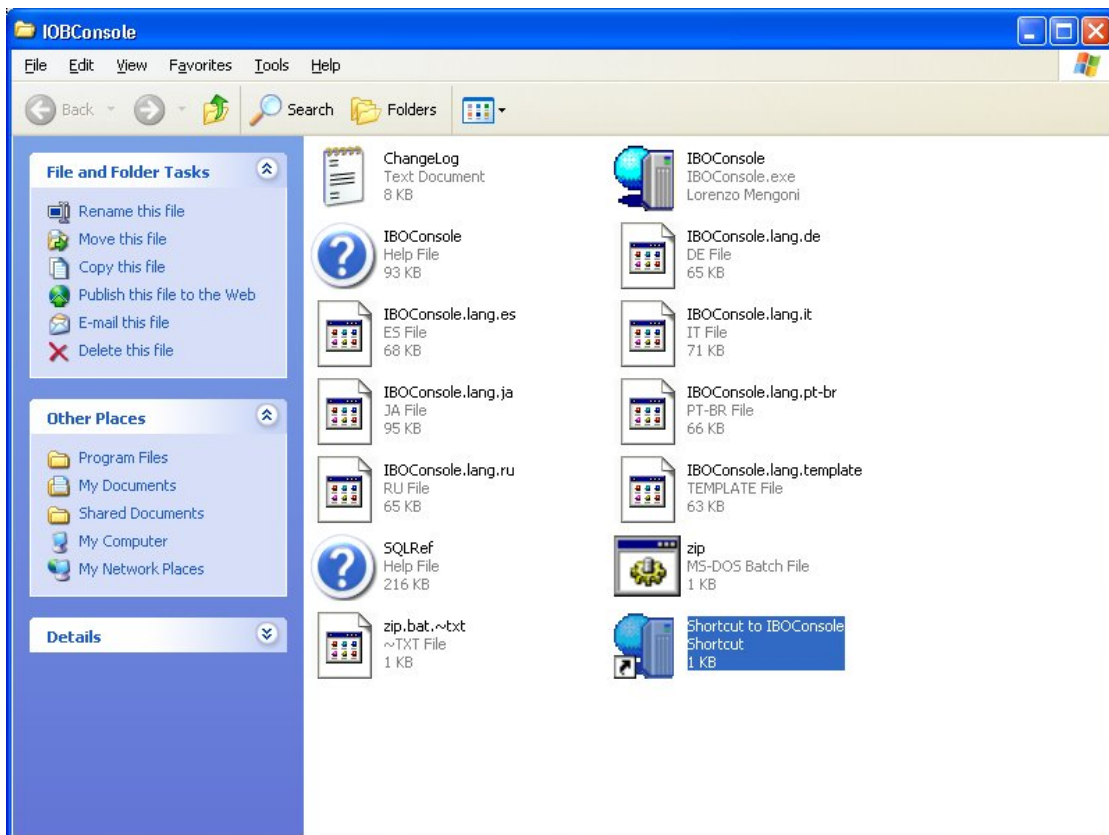
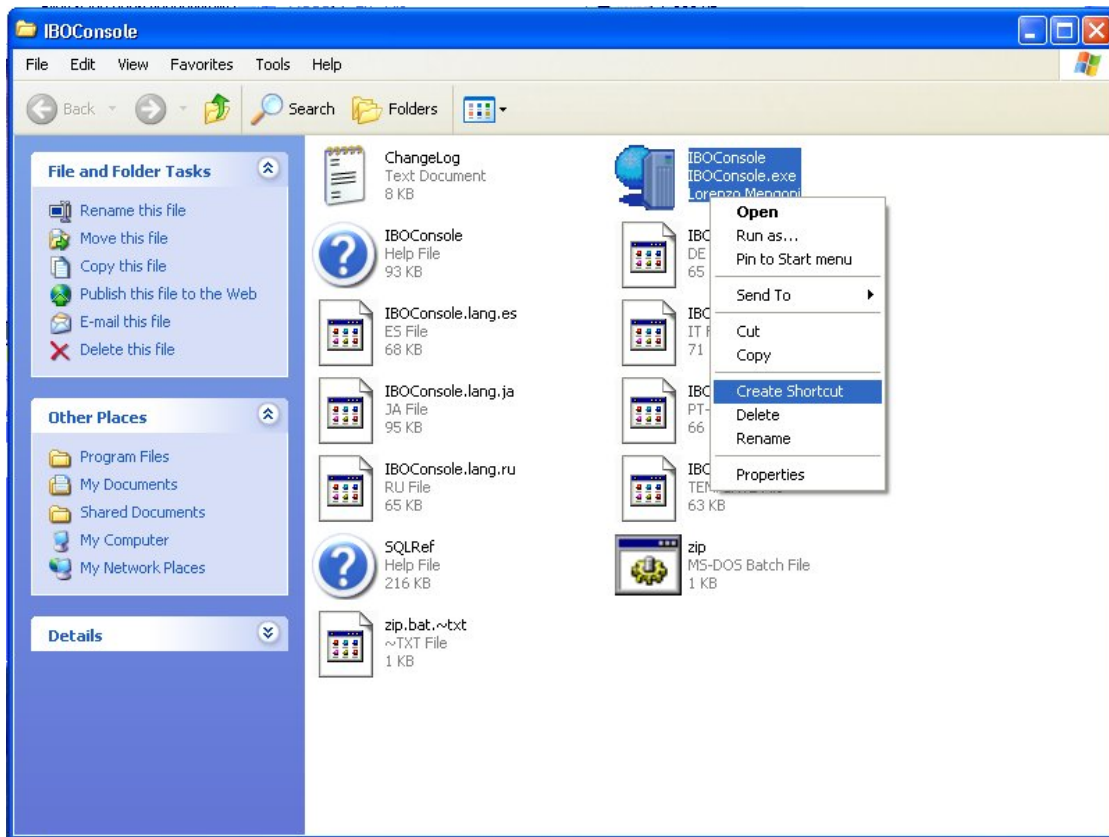


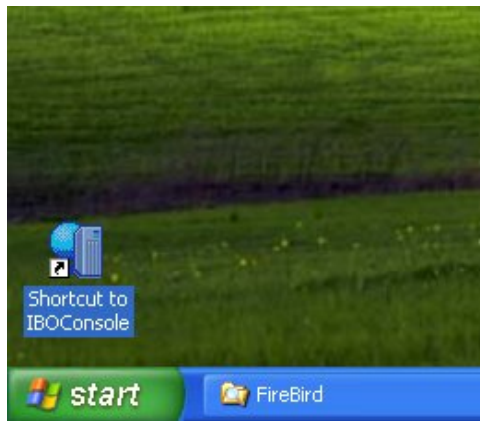
2. Installing IBOconsole



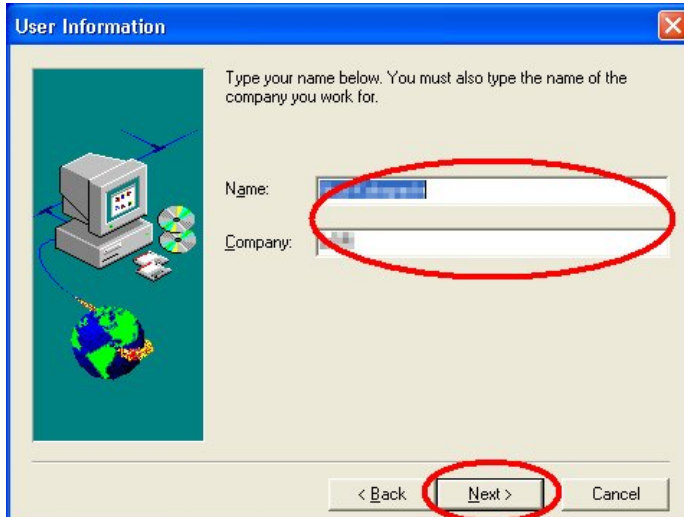
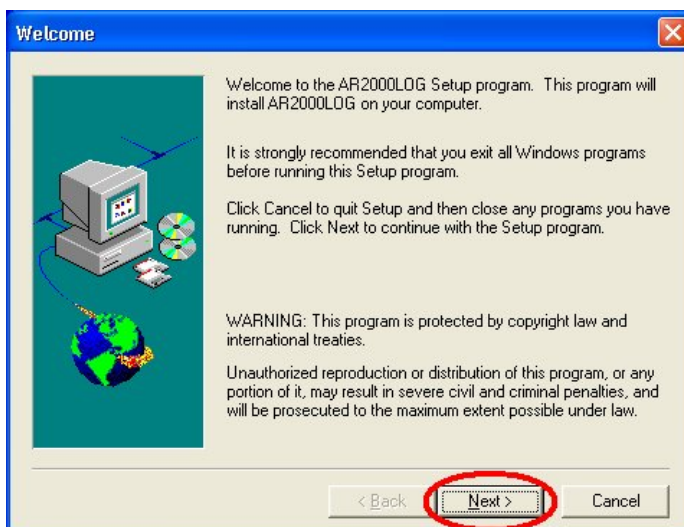
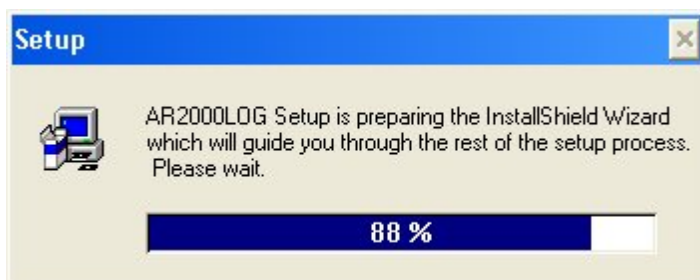


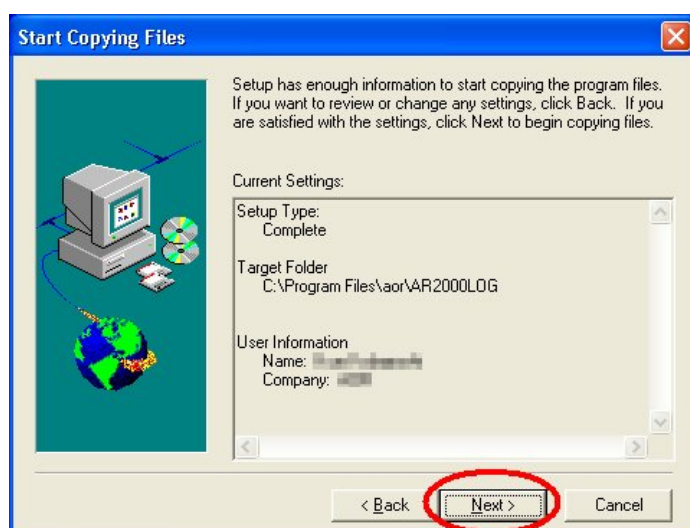
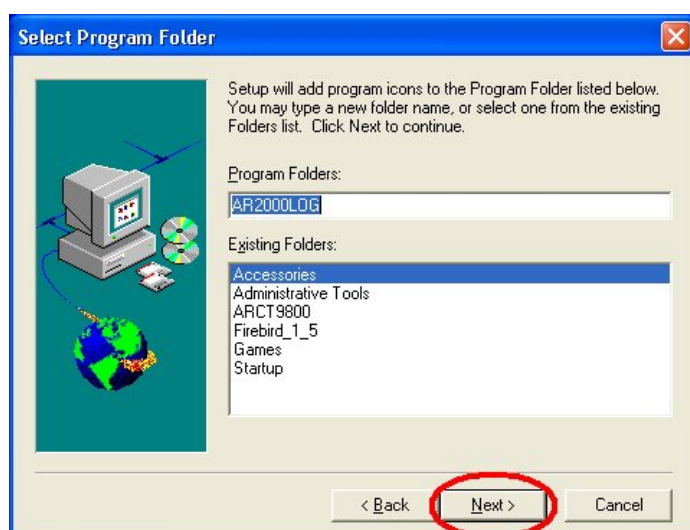
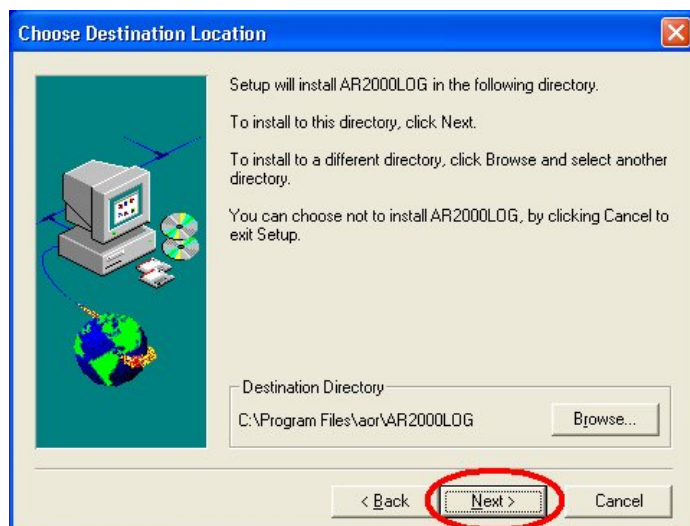


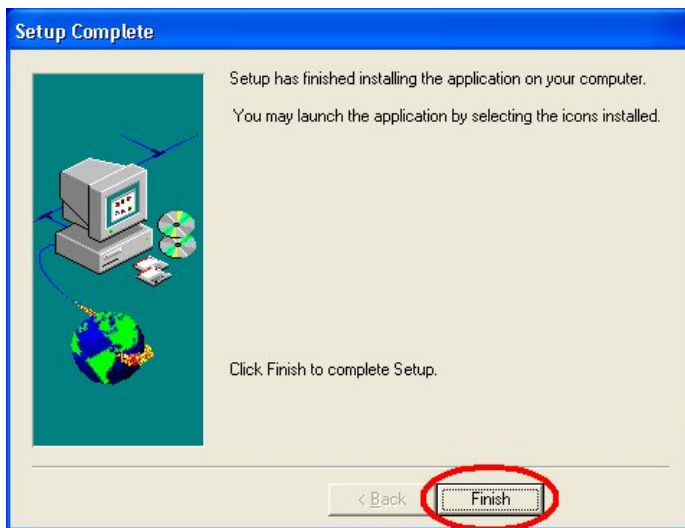




3. Installing SR2000LOG



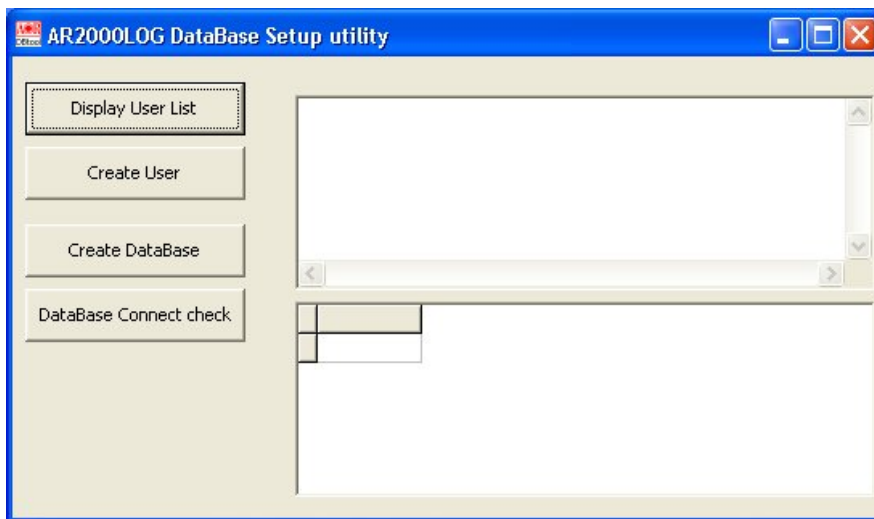




IMPORTANT: At this point it is necessary to apply an upgrade by replacing the SR2000Log.exe located in Program Files>AOR>SR2000LOG with the new SR2000Log.exe version supplied here. When windows asks you if you want to replace the file, click YES.

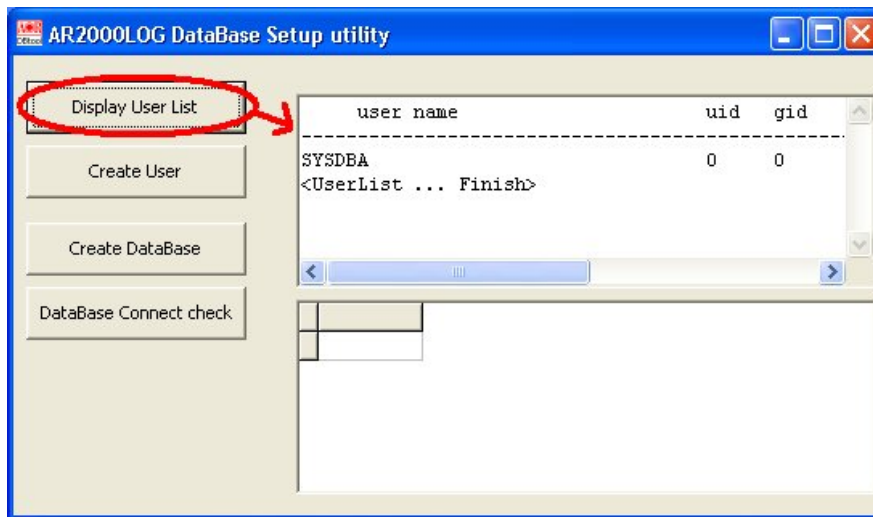
4. Preparing the user access & database



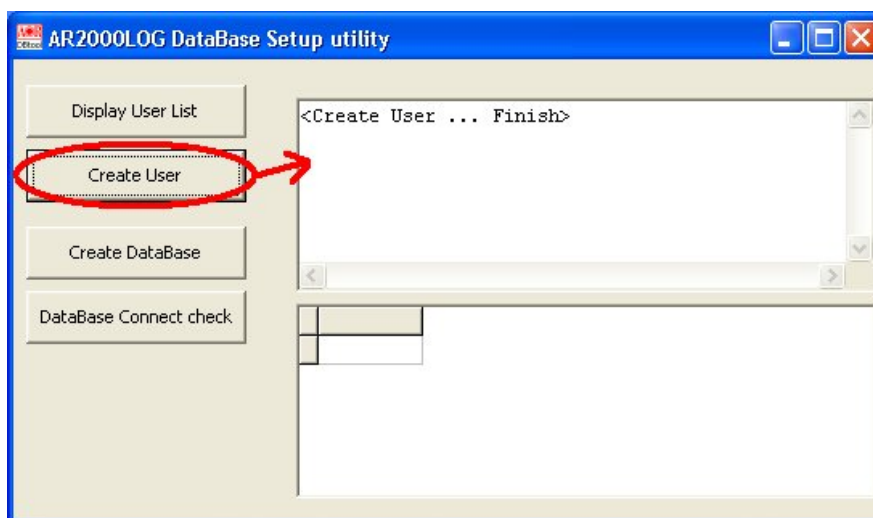


The "user access" operation (4.1 to 4.3) needs to be done only once.

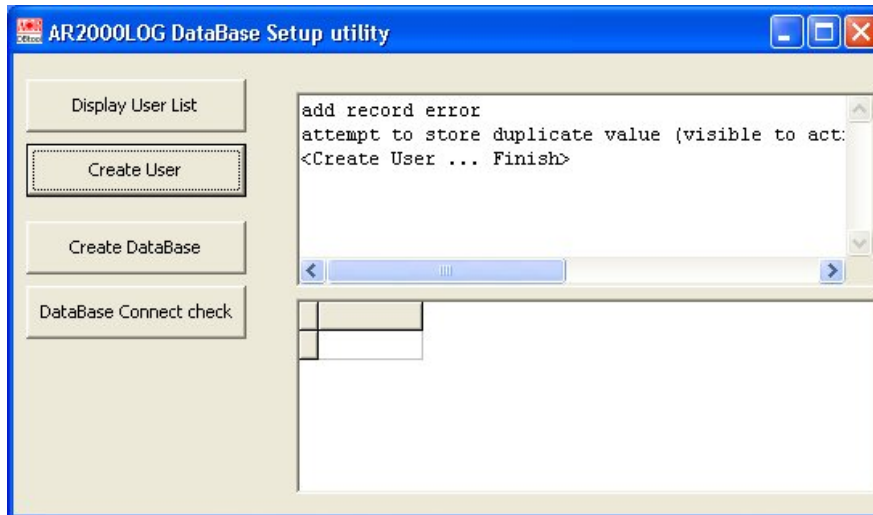
4.1



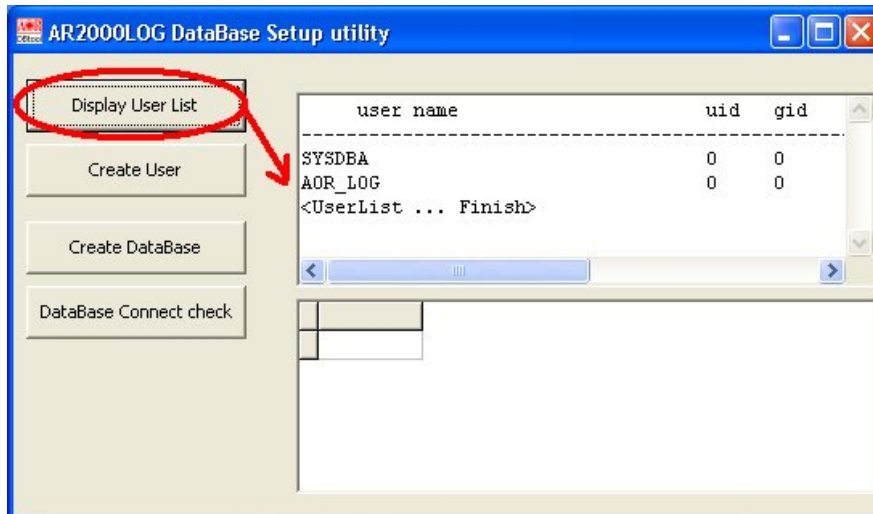
4.2



If the user has already been created, the following error appears.

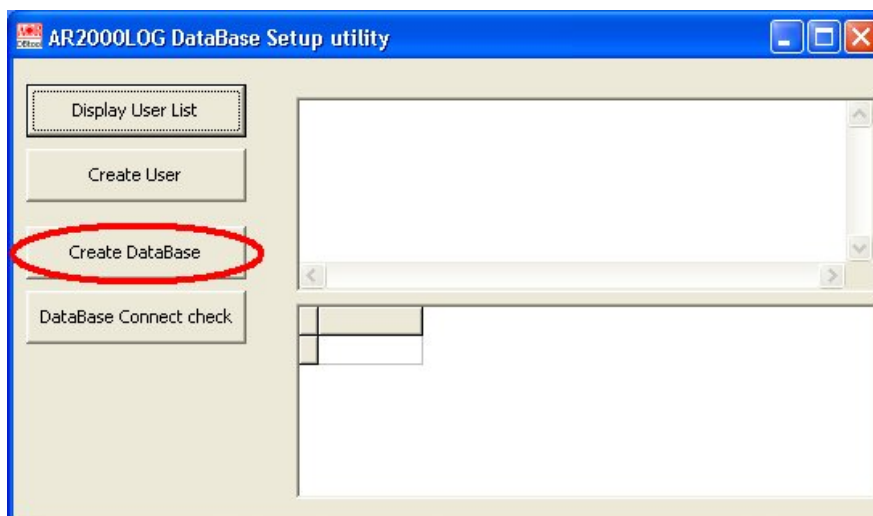


4.3

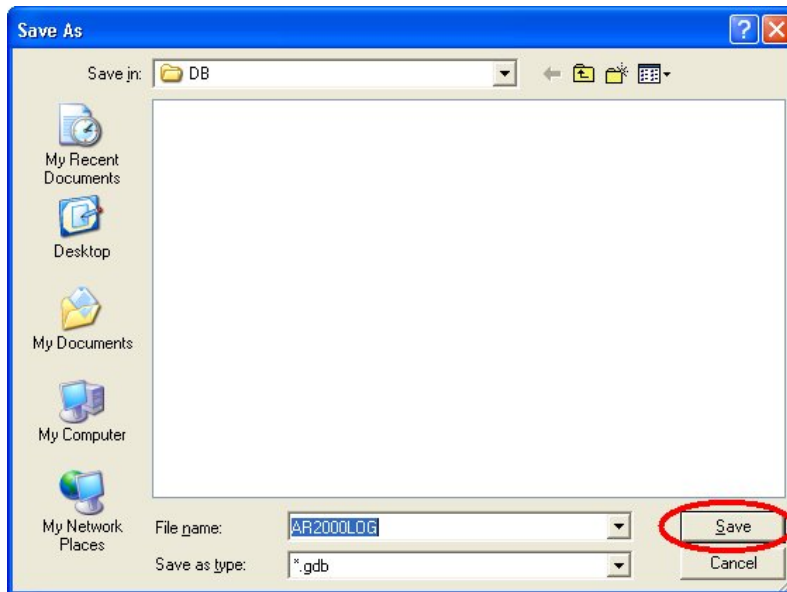


If the database file (created from 4.4 to 4.7) is erased some reason, it needs to be recreated.

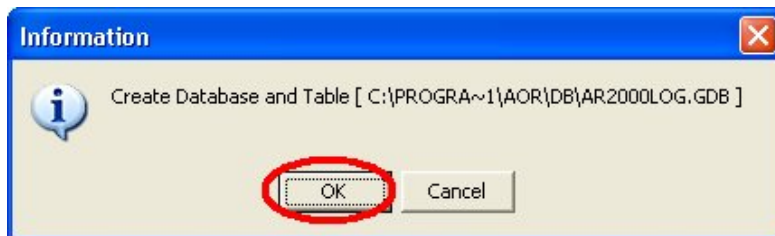
4.4



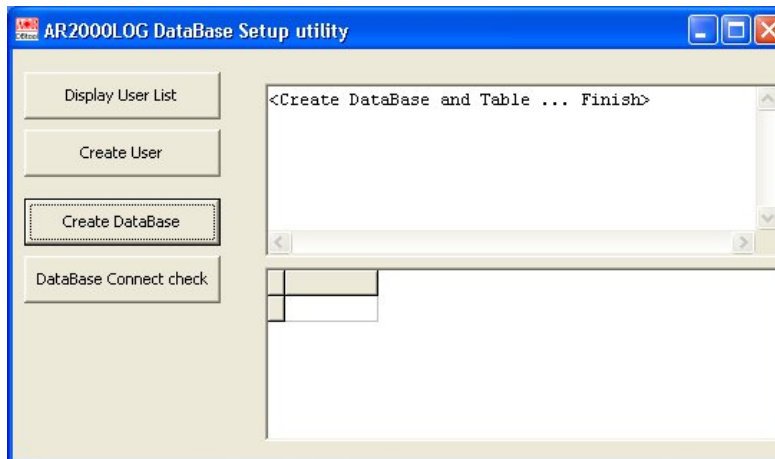
4.5



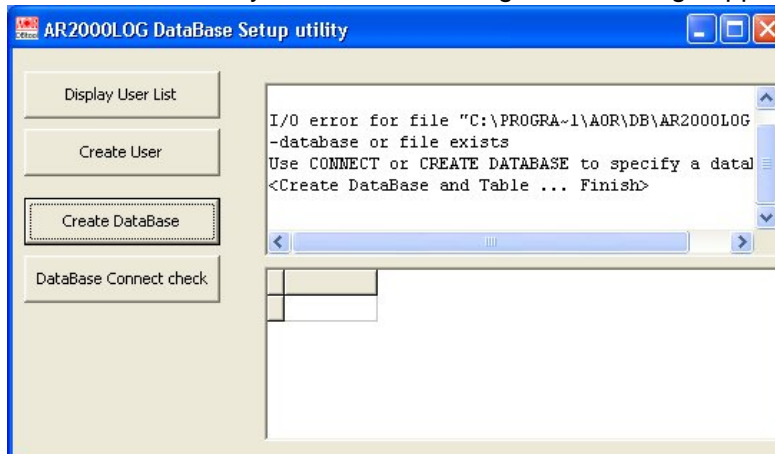
4.6



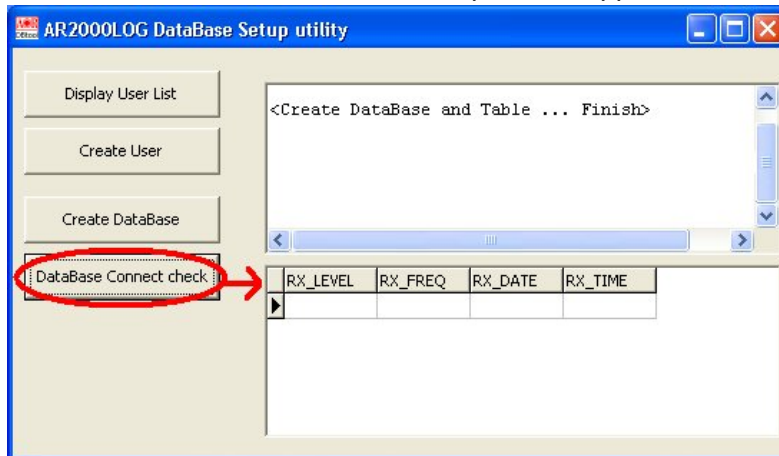
4.7



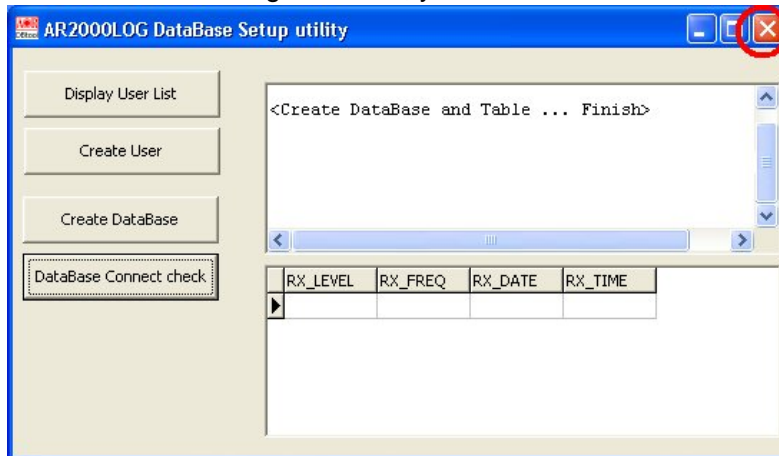
If the database file already exists, the following error message appears:



To verify that the database connection is functioning normally, click on “database connect check”. Column names such as “RX level” and “RX freq” should appear.



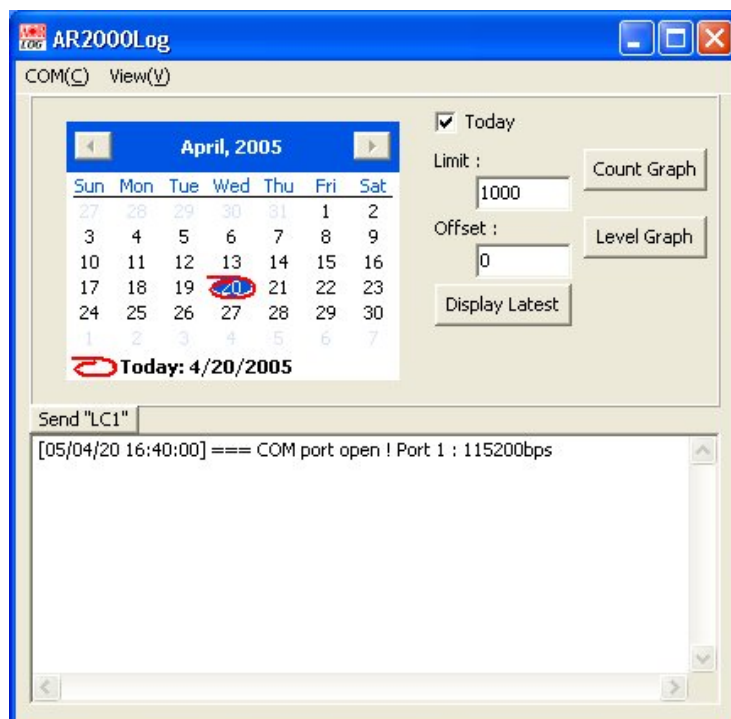
User access & database settings are over, you can close this window.



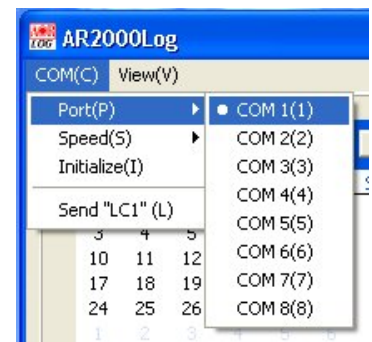
SR2000LOG

USER GUIDE

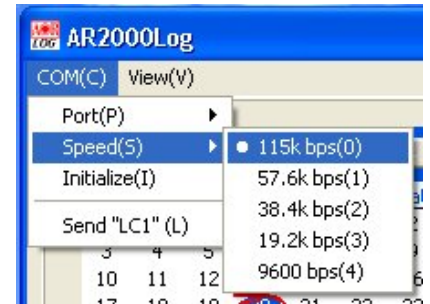
Start the data logging:



Select the COM PORT to which the SR2000 is connected.



Select the COM PORT connection speed, as set in the SR2000 configuration screen.

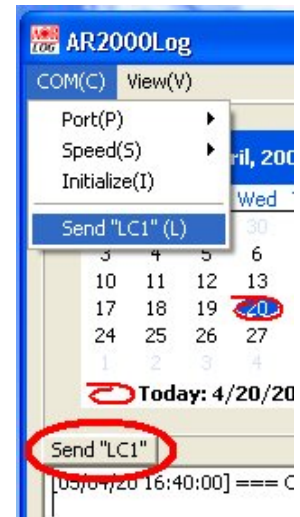


Selecting "Send LC1" does instruct the SR2000 to send the data to the PC.

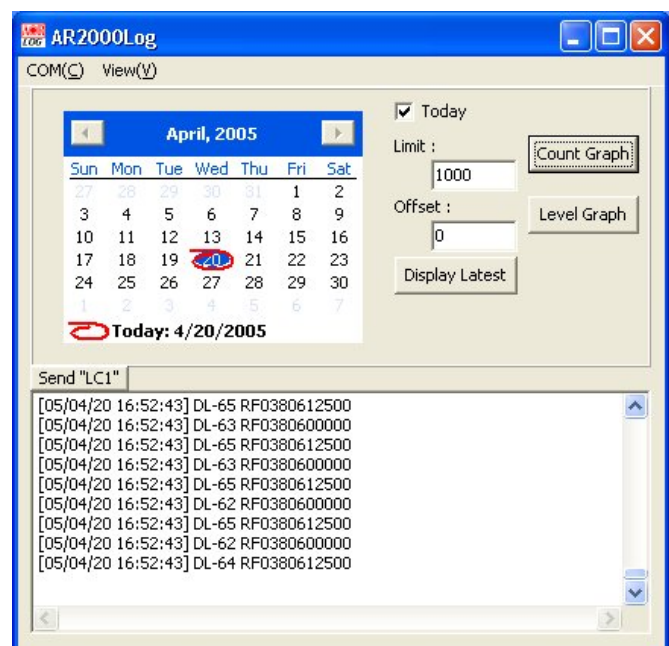
There are 2 ways to activate the function:

1. Click "COM" and select "Send LC1".
2. Click on the "Send "LC1" (L)" tab as circled in red.

SR2000 remembers and stores this function, therefore you shouldn't have to activate it more than once.

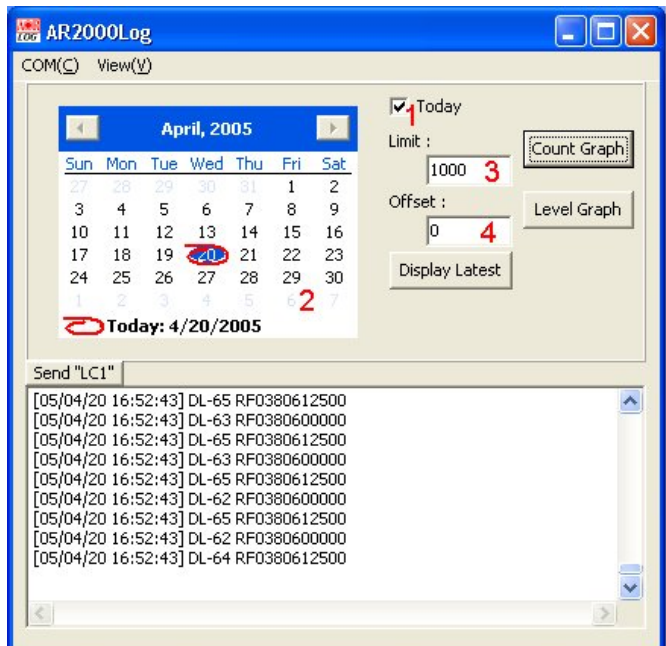


The monitoring results are displayed "live" at real speed. (A slow PC can slow down the speed at which the SR2000 is streaming the data)



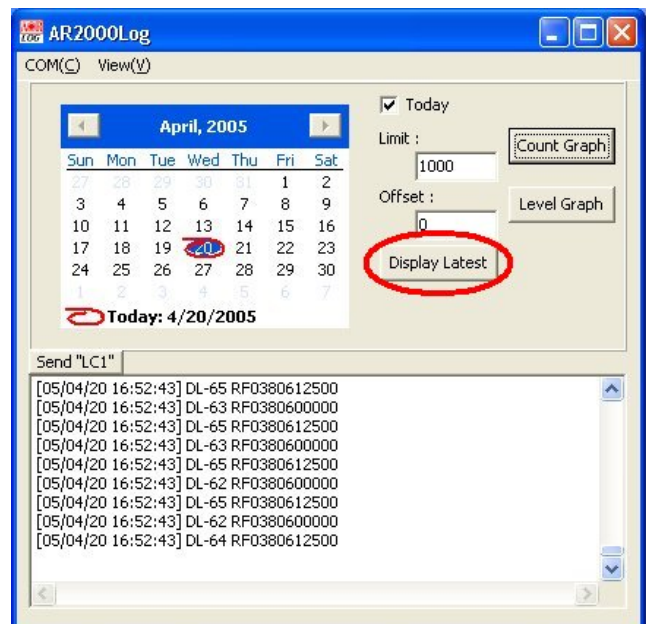
LOG configuration

1. Today :
When selected, the calendar automatically selects today's date.
2. Calendar
Use the arrows to select the month/year, then to the day selected with your mouse.
3. Limit :
Decide upon the number of entries which should be displayed when you click on "Display Latest". This limit value does not affect the graphical charts explained later.
4. Offset :
Decide upon how many entries should be bypassed before the start of the logging displayed by clicking "Display Latest". This limit value does not affect the graphical charts explained later.



The logged data grid

Clicking on "Display Latest" calls a separate window, displaying the latest logged data, according to parameters set from 1 to 4 (above).



The logged data corresponds to the latest entries UP TO THE TIME when "Display Latest" was clicked. In other words, when the logged data grid appears, the data grid is not updated anymore.

4/20/2005 4:54:09 PM

Update Make CSV file

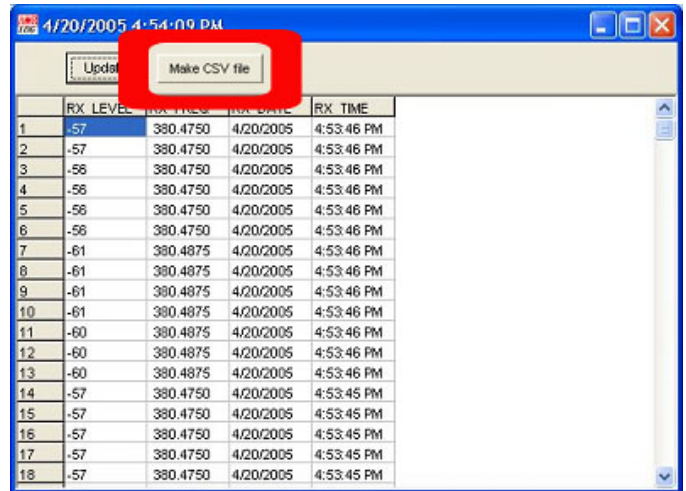
	RX LEVEL	RX FREQ	RX DATE	RX TIME
1	-57	380.4750	4/20/2005	4:53:46 PM
2	-57	380.4750	4/20/2005	4:53:46 PM
3	-56	380.4750	4/20/2005	4:53:46 PM
4	-56	380.4750	4/20/2005	4:53:46 PM
5	-56	380.4750	4/20/2005	4:53:46 PM
6	-56	380.4750	4/20/2005	4:53:46 PM
7	-61	380.4875	4/20/2005	4:53:46 PM
8	-61	380.4875	4/20/2005	4:53:46 PM
9	-61	380.4875	4/20/2005	4:53:46 PM
10	-61	380.4875	4/20/2005	4:53:46 PM
11	-60	380.4875	4/20/2005	4:53:46 PM
12	-60	380.4875	4/20/2005	4:53:46 PM
13	-60	380.4875	4/20/2005	4:53:46 PM
14	-57	380.4750	4/20/2005	4:53:45 PM
15	-57	380.4750	4/20/2005	4:53:45 PM
16	-57	380.4750	4/20/2005	4:53:45 PM
17	-57	380.4750	4/20/2005	4:53:45 PM
18	-57	380.4750	4/20/2005	4:53:45 PM

EXPORTING THE LOG DATA TO EXCEL

Click on the “Make CSV file” button.

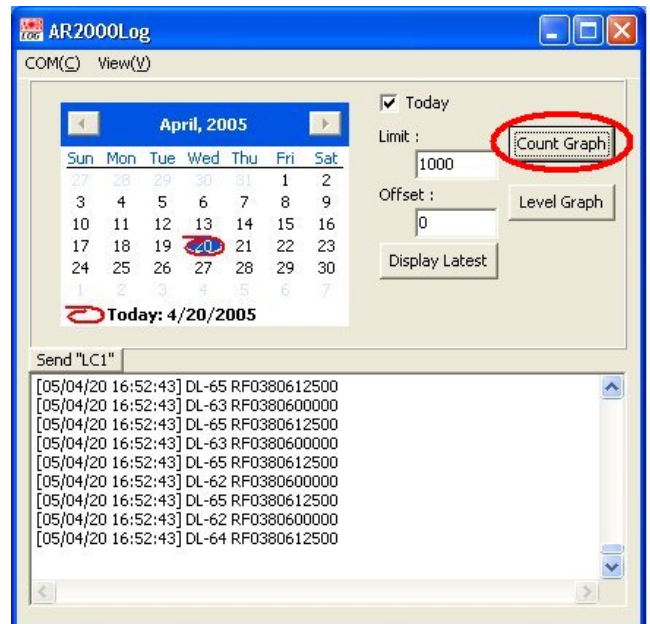
Save this CSV file in a folder of your choice, with the name of your choice.

Open a blank sheet in EXCEL and drag the saved CSV log file with your mouse into the blank Excel sheet.



The count graph

Clicking on Count Graph shows a graphical representation of all logs for the day chosen in the calendar. It shows the number of times each frequency has been detected during the scan period. Limit and offset values do not apply.



The graphical representation concerns data logged up to the point when "Update" was clicked.

1. Freq. Axis Limit :

When unchecked, there is no limitation on numbers of vertical bars on display.

2. When [1.] is checked, it is possible to decide the maximum number of verticals bars displayed on the screen.

3. Top Data :

Return to the leftiest frequency value of the graph.

4. Prev. Data :

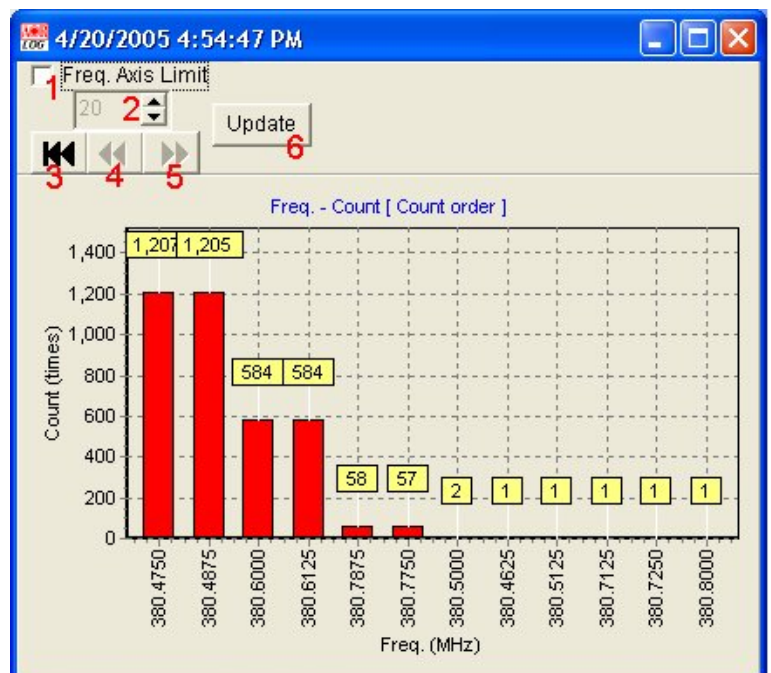
Moves the horizontal frequency axis to the left.

5. Next Data :

Moves the horizontal frequency axis to the right.

6. [Update] :

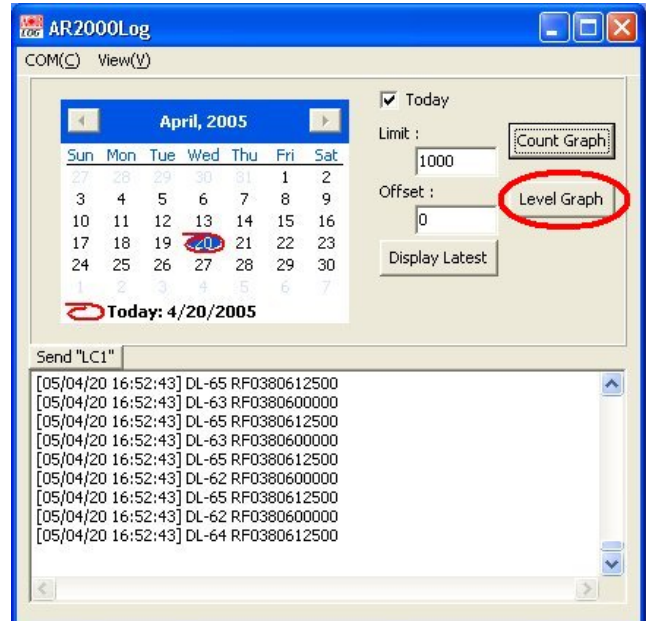
The displayed graph is updated according to loggings made up to the point when you clicked "Update".



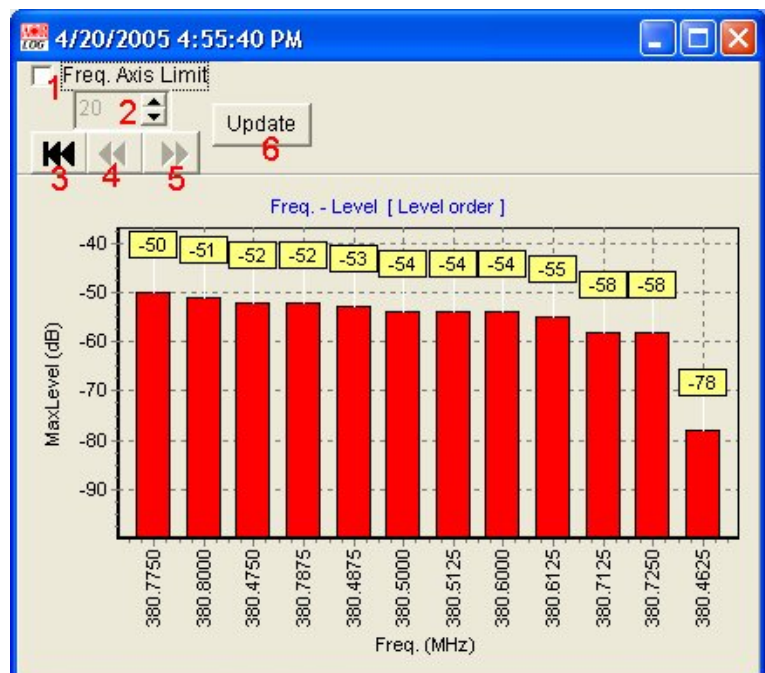
Level graph

Clicking on Level Graph shows a graphical representation of all logs for the day chosen in the calendar. It shows the maximum signal level in dB, for each frequency, which has been detected during the scan period.

Limit and offset values do not apply.



The graphical representation concerns data logged up to the point when "Update" was clicked.



1. Freq. Axis Limit :

When unchecked, there is no limitation on numbers of vertical bars on display.

2. When [1.] is checked, it is possible to decide the maximum number of verticals bars displayed on the screen.

3. Top Data :

Return to the leftiest frequency value of the graph.

4. Prev. Data :

Moves the horizontal frequency axis to the left.

5. Next Data :

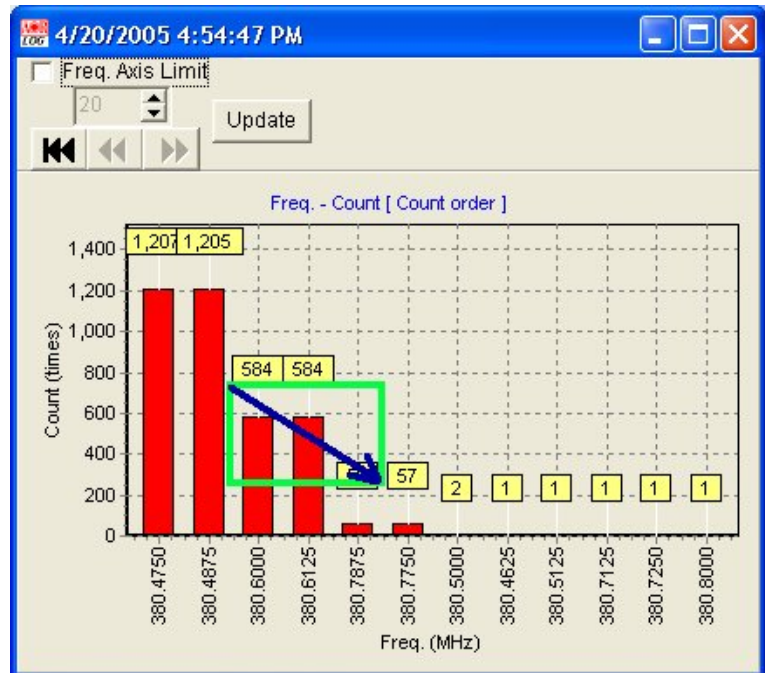
Moves the horizontal frequency axis to the right.

6. [Update] :

The displayed graph is updated according to loggings made up to the point when you clicked "Update".

A graph can be zoomed and scrolled as explained below:

- First you can adjust the window size with your mouse, to desired size. Secondly it is possible to zoom into a selected part of the graph, and to maximize it to the window size you fixed. To do so, make your selection with the mouse, keeping the left mouse button pressed, by drawing a square from the top left corner to the bottom right corner.
- To return to original size, draw again a square anywhere in the window, but this time from the bottom right corner to the top left corner.



Aug.10, 2005

This manual is a temporary version.

AOR, Ltd
www.aorja.com